

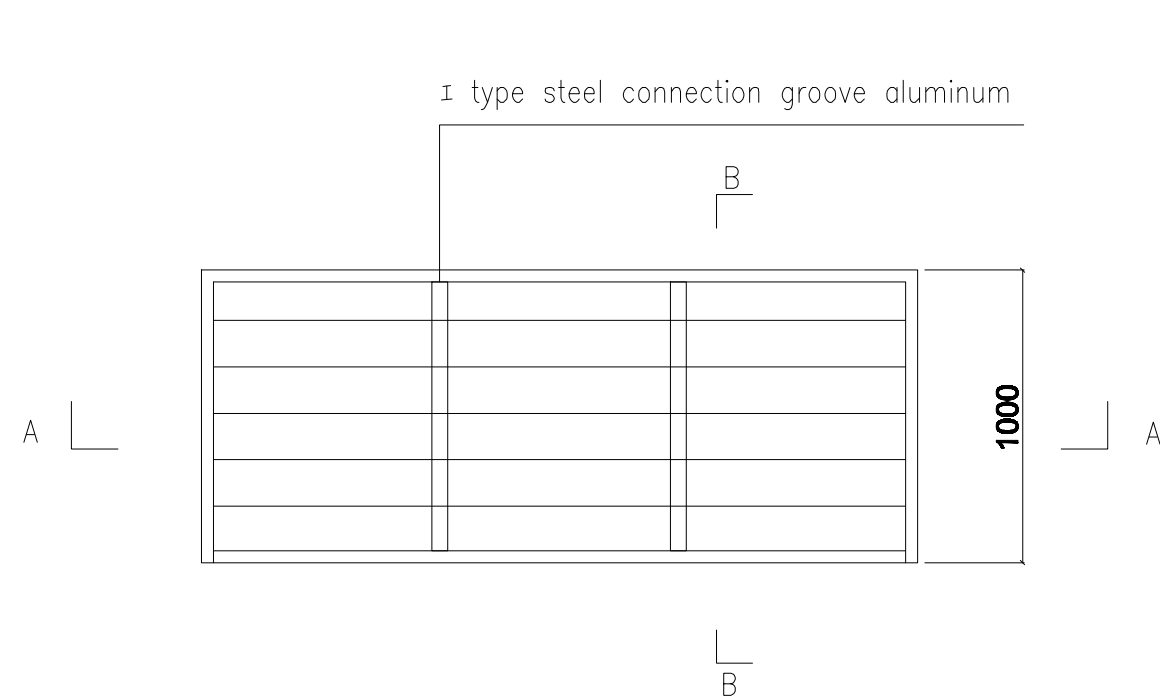
No.	Code	Name	Size (mm)	Remark
01	D1	steel door	800-2080	curved aluminum threshold the height of not more than 8mm
02	D2	steel door note: spherical lock	700-2000	curved aluminum threshold the height of not more than 8mm
03	D3	steel door note: spherical lock	800-2000	curved aluminum threshold the height of not more than 8mm
04	D4	glass double open door note: with door closers	1800-2880	curtain aluminum alloy frame
05	D5	steel double open door	1800-2880	curved aluminum threshold the height of not more than 8mm
06	D6	steel escape door note: the push rod lock	1000-2880	Core wool board
07	D7	steel double open door	1200-2880	curved aluminum threshold the height of not more than 8mm
08	D8	steel door note: spherical lock	800-2880	curved aluminum threshold the height of not more than 8mm
09	W1	Alu. sliding single glass window note: toughened glass	800-1200	including sashes and PVC fabric type shutter
10	W2	Alu. sliding single glass window Note: the glass is tempered glass (treated)	800-800	including sashes
11	W3	tempered glass (ung window)	2400-2900	split
12	W4	Aluminum blinds window	800-800	used for wall Mount roof trusses
13	B1	ventilator	250-250	external installation of metal shutters cover internal installation of stainless steel wire mesh
14	A	magnesium oxide board	18	
15	B	PVC floor	1.6	
16	C	aluminum plate	1.5	
17	outside wall panel	75mm rock wool panel (double side 0.45mm steel sheet ,rock wool density :100kg/m³)		
18	inside wall panel	80mm rock wool panel (double side 0.45mm steel sheet ,rock wool density :100kg/m³)		

Ground floor layout

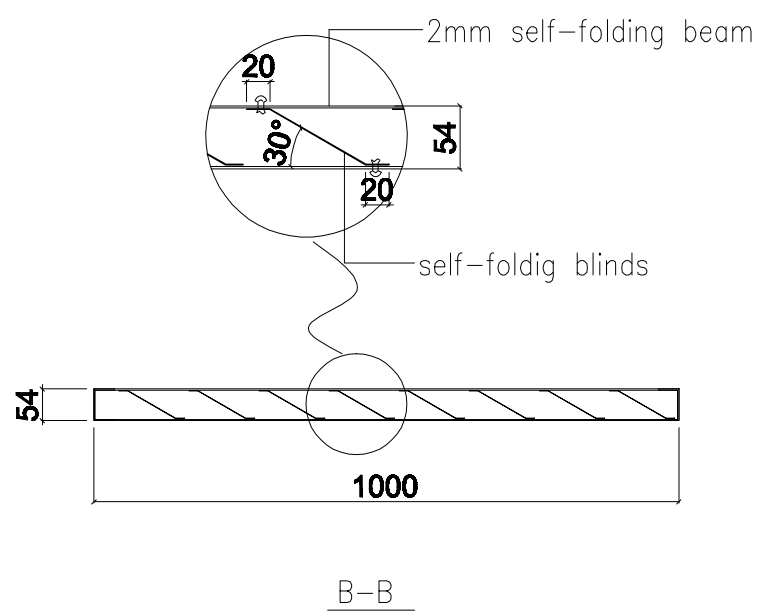
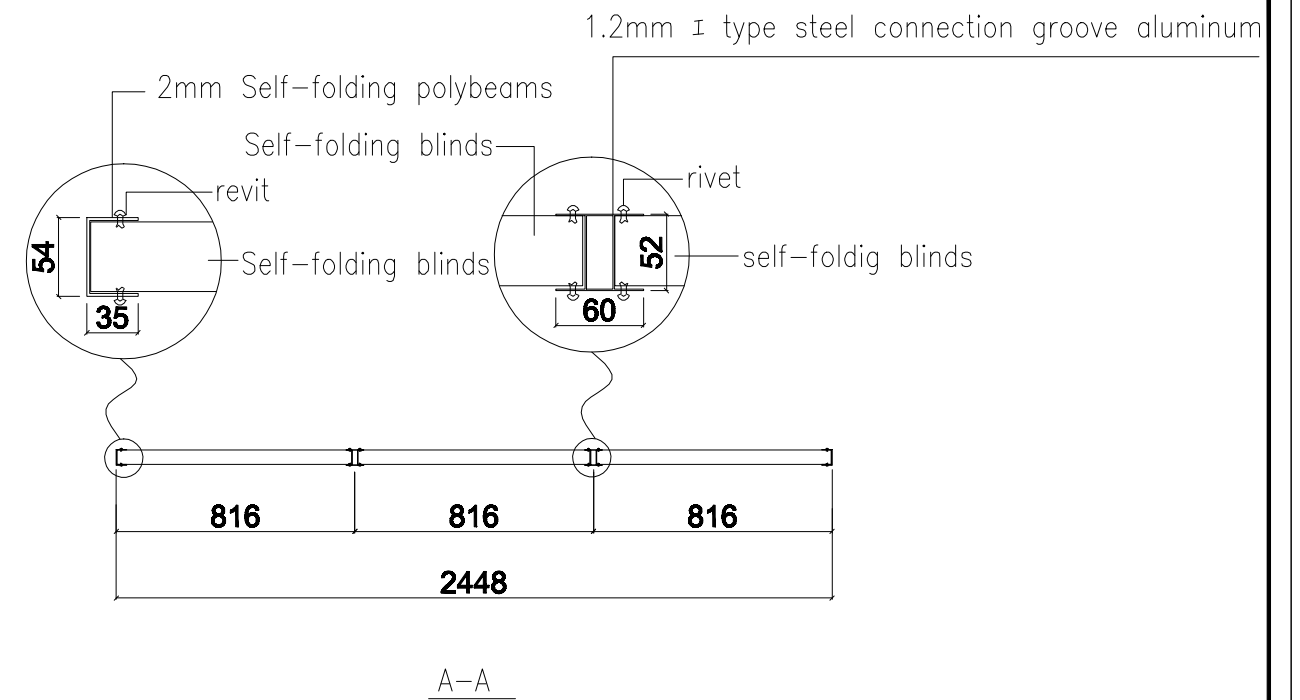
Notes:

1. the integrated bathroom, there is need to raise the position of the toilet 120mm, the bottom of the slope of 8% water
 2. In the project, the installation gap between each single module is 10mm.
 3. In the project, all of the disabled toilet sink with hanging pots.
 4. The whole building needs to stand tall 540mm.
 5. All interior mirror with the required elze is 500 * 700mm.
 6. Water heater installation projects require pre-mounting bracket.
- NOTE: The water heater to provide customers Haier 60L water heater.

Project name 工程名称 by the sea hotel	Project No. 工程编号 PT160158 Item 图纸名称	Designer 设计师 ZTH Category 设计阶段 PROPOSAL	Drawer 制图员 ZTH Proofreader 校对 夏季风	Assessor 审核 夏季风 Date 日期 2016.06.16	Page 图号 01 Proportion 比例
--	--	--	--	---	-----------------------------------



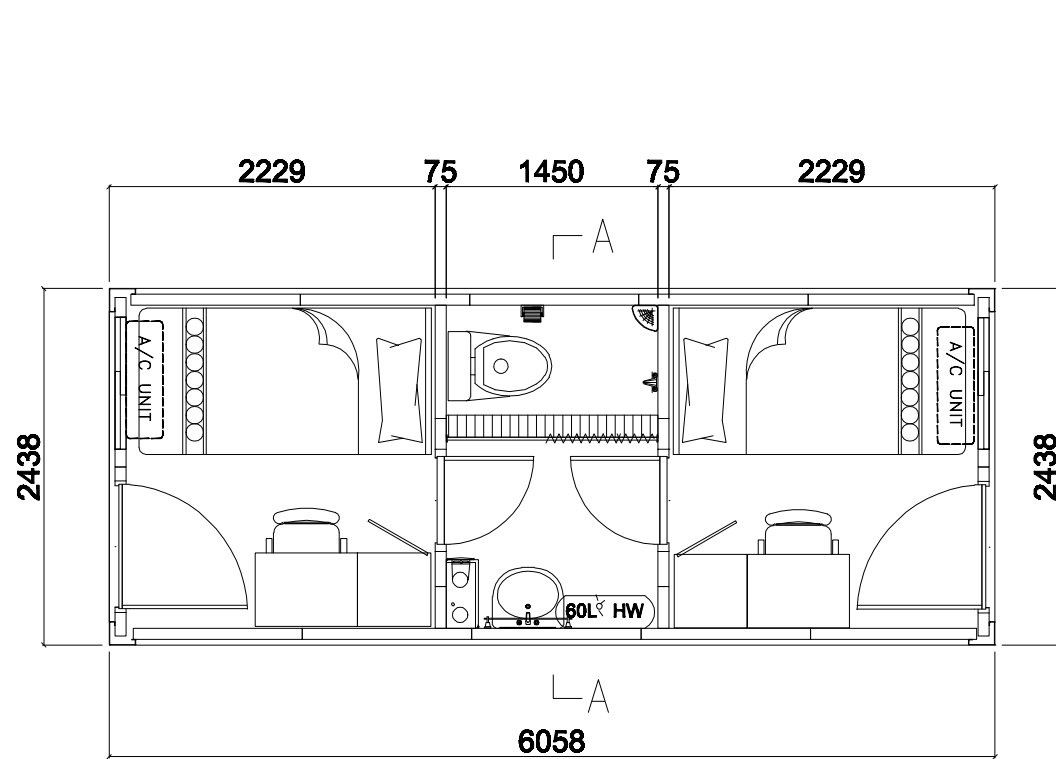
Awning layout



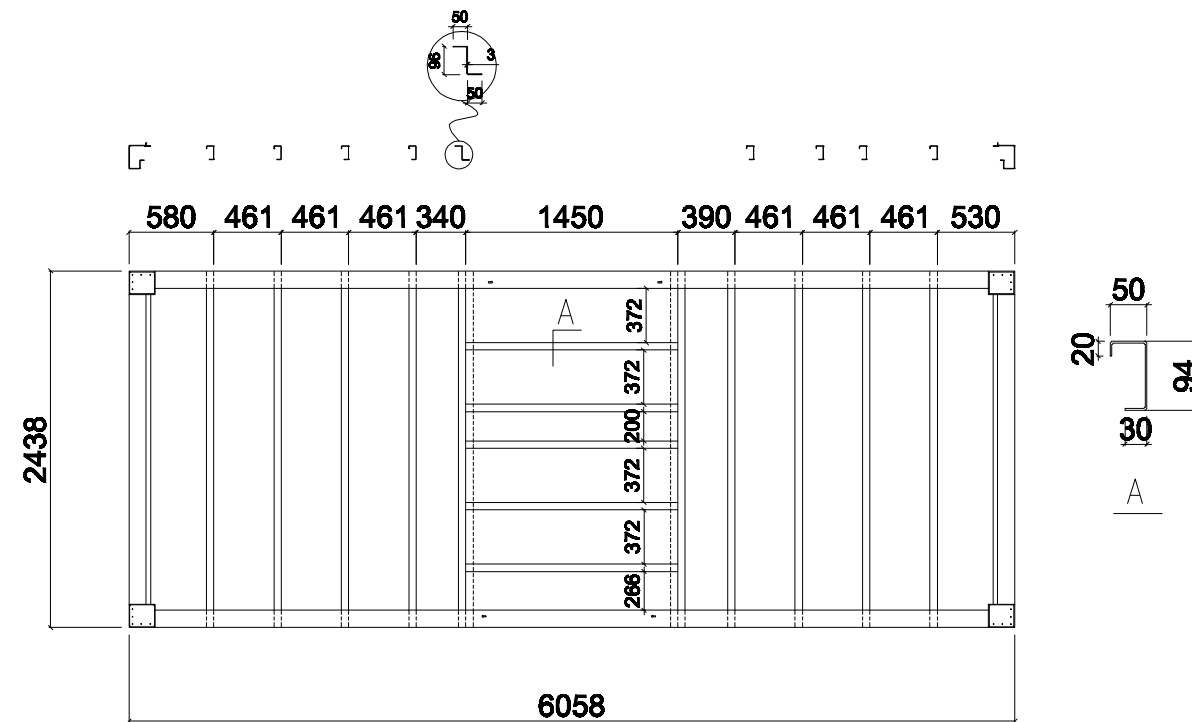
Note:

- 1: steel galvanized 8-10μm, paint color RAL 2009
- 2: blinds is 0.5mm folding color steel plate , galvanized, paint color RAL 2009

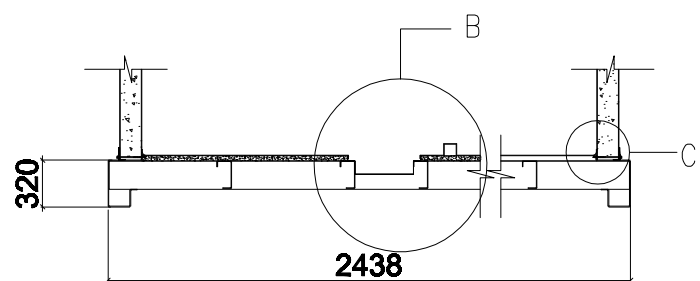
Project name 工程名称 by the sea hotel	Project No. 工程编号 PT160158 Item 图纸名称	Designer 设计师 ZTH Category 设计阶段	Drawer 制图员 ZTH Proofreader 校对 夏季风	Assessor 审核 夏季风 Date 日期 2016.06.08	Page 图号 01 Proportion 比例 1:50
--	--	---	--	---	--



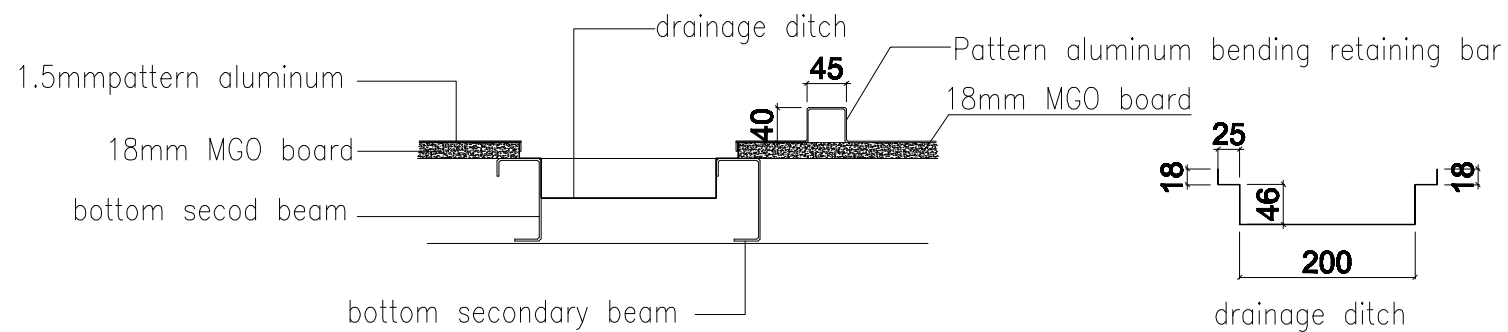
middle toilet layout



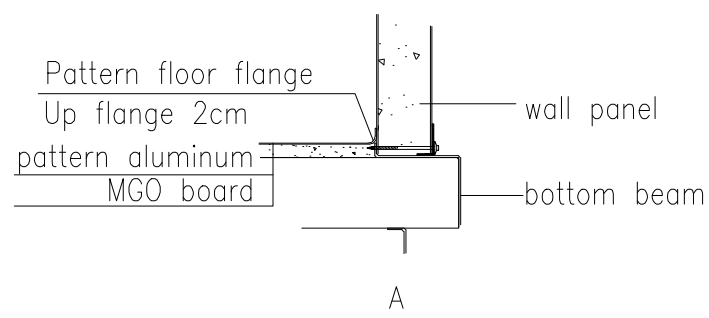
middle toilet bottom frame layout



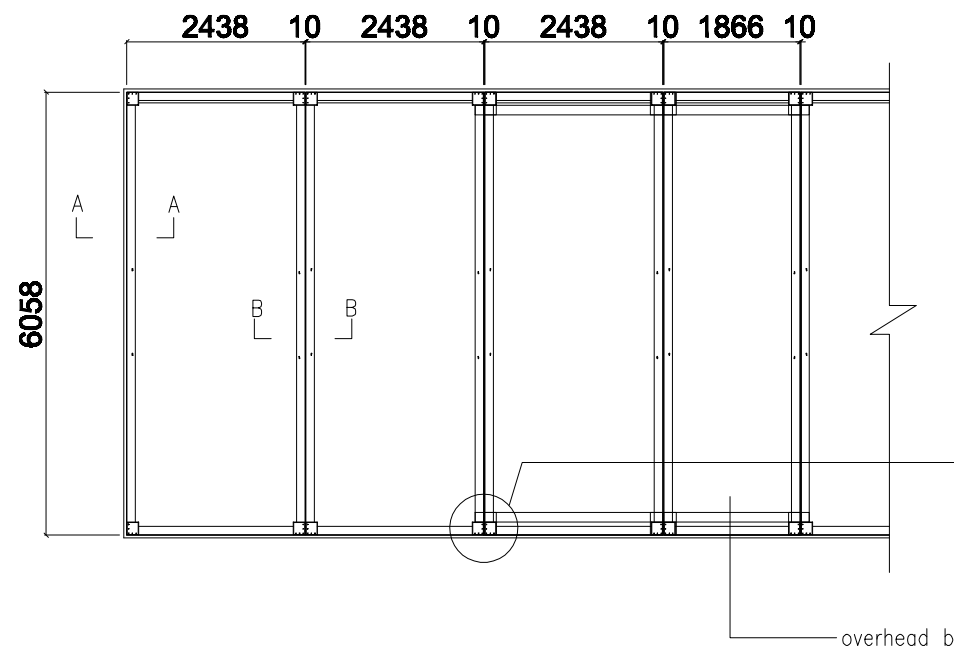
toilet floor structure



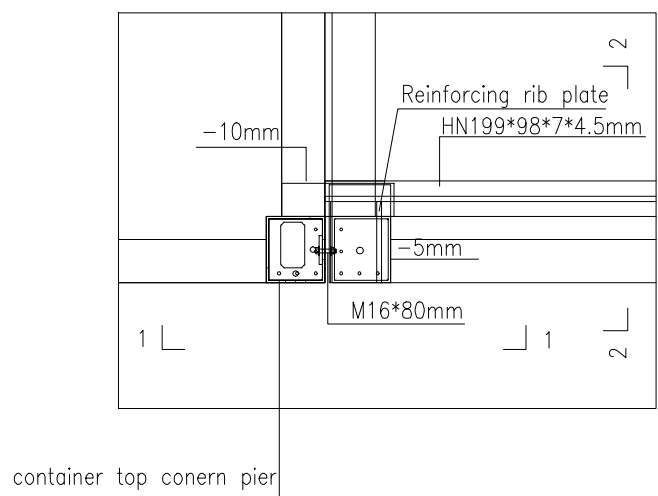
Factories can be adjusted according to actual production



Project name 工程名称 by the sea hotel	Project No. 工程编号 PT160158 Item 图纸名称	Designer 设计师 ZTH Category 设计阶段	Drawer 制图员 ZTH Proofreader 校对 夏季风	Assessor 审核 夏季风 Date 日期 2016.06.08	Page 图号 01 Proportion 比例 1:50
--	--	---	--	---	--

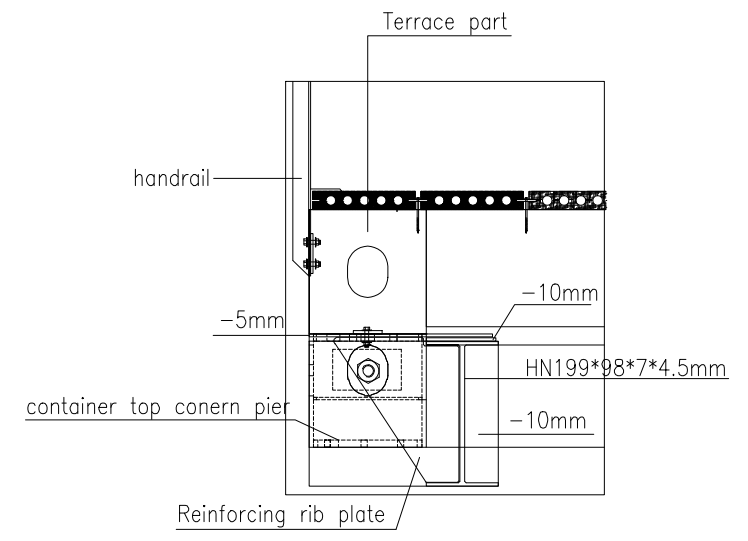


Outdoor terrace layout



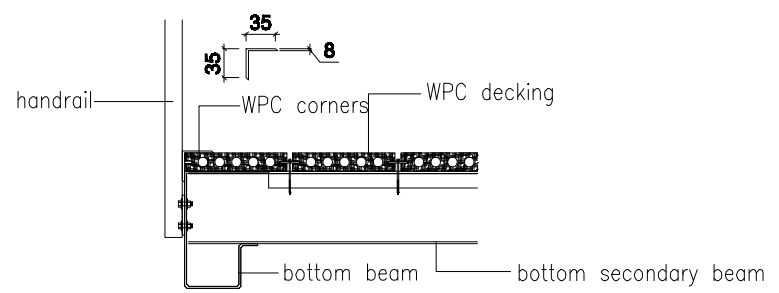
container top corner pier

架空梁与箱体连接节点
平面图

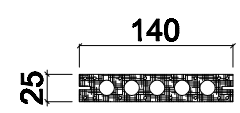


Overhead beam and container connection node

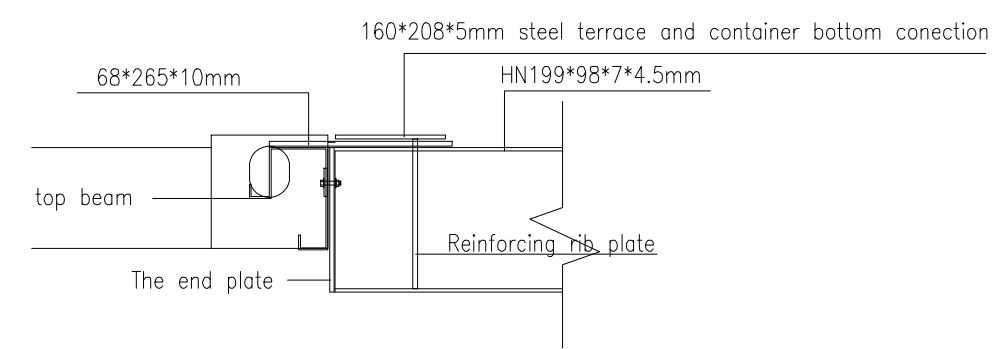
2-2



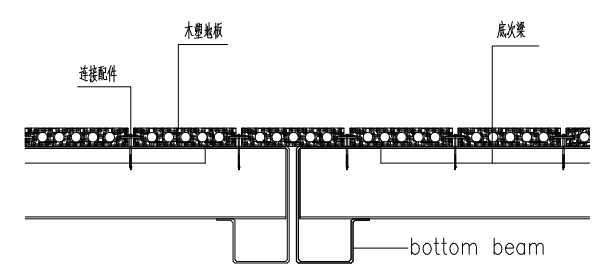
A-A



WPC board section

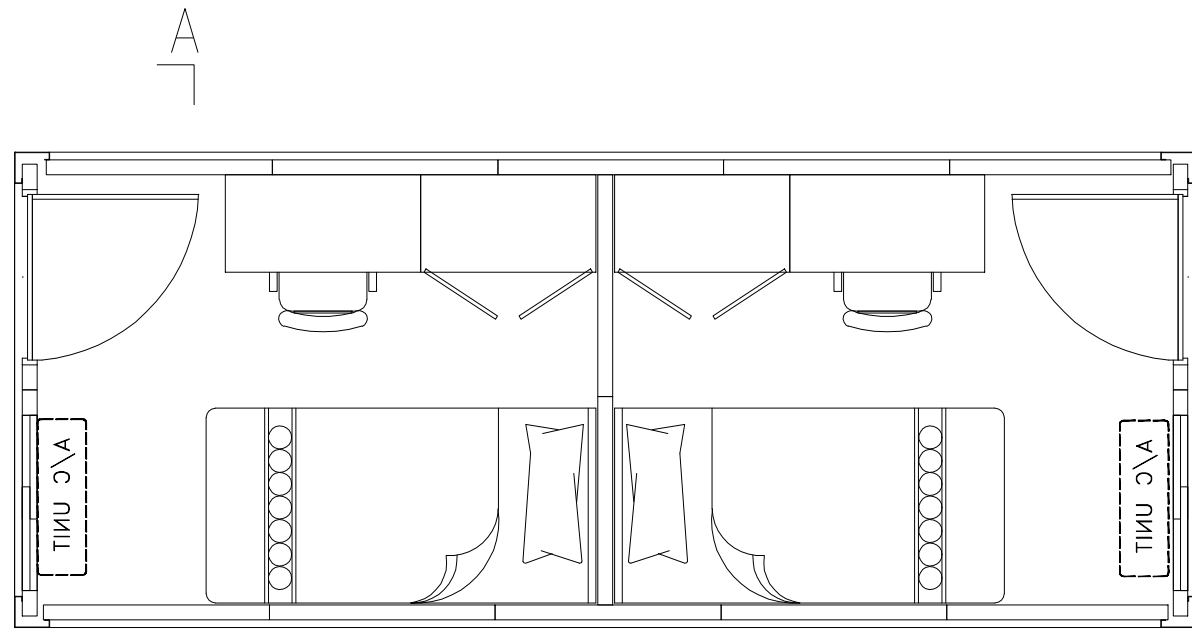


Overhead beam and container connection node



B-B

Project name 工程名称 by the sea hotel	Project No. 工程编号 PT160158 Item 图纸名称 阳台结构图	Designer 设计师 ZTH Category 设计阶段	Drawer 制图员 ZTH Proofreader 校对 夏季风	Assessor 审核 夏季风 Date 日期 2016.06.08	Page 图号 01 Proportion 比例 1:50
--	--	---	--	---	--



modular layout

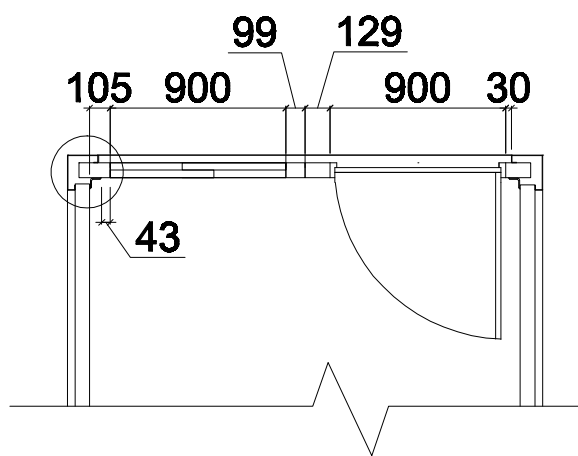
B-B



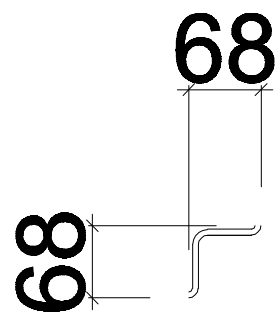
2438

A-A

column

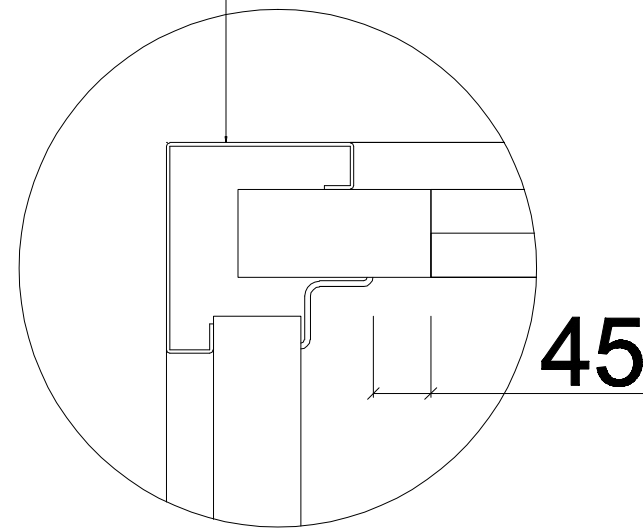


B-B



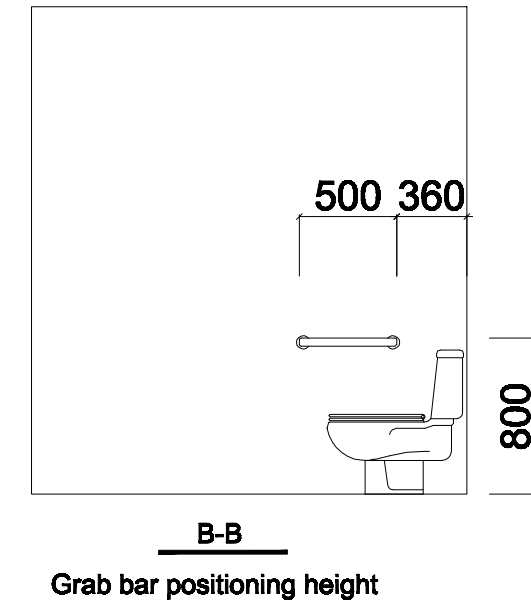
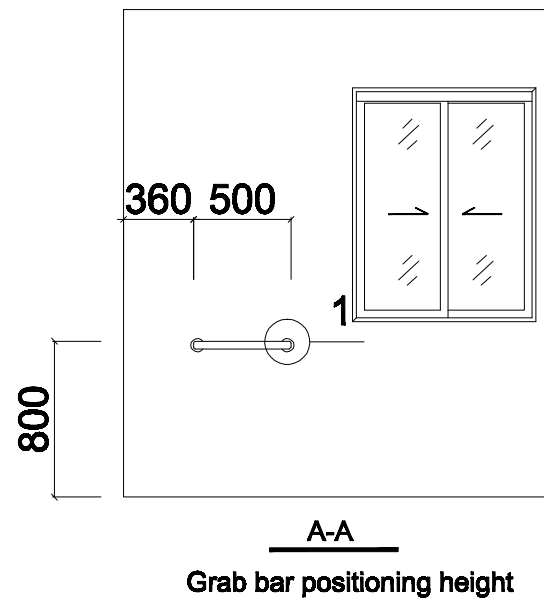
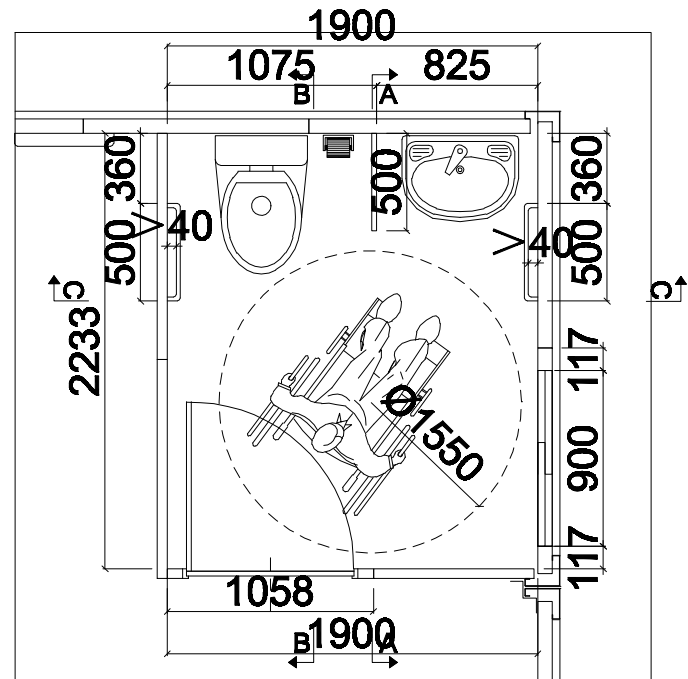
68

68

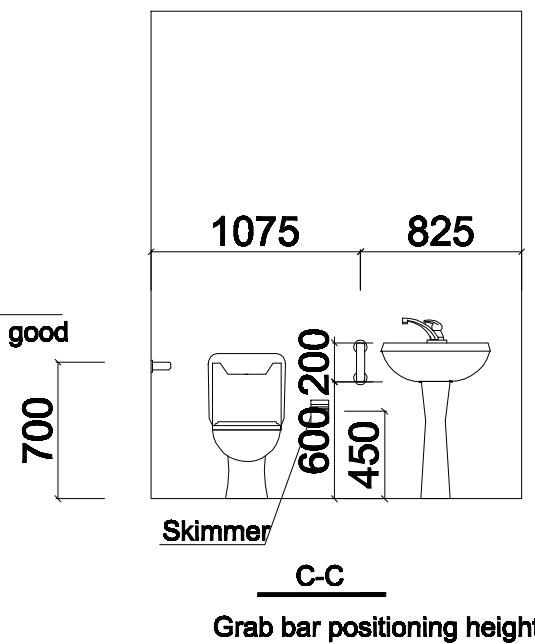
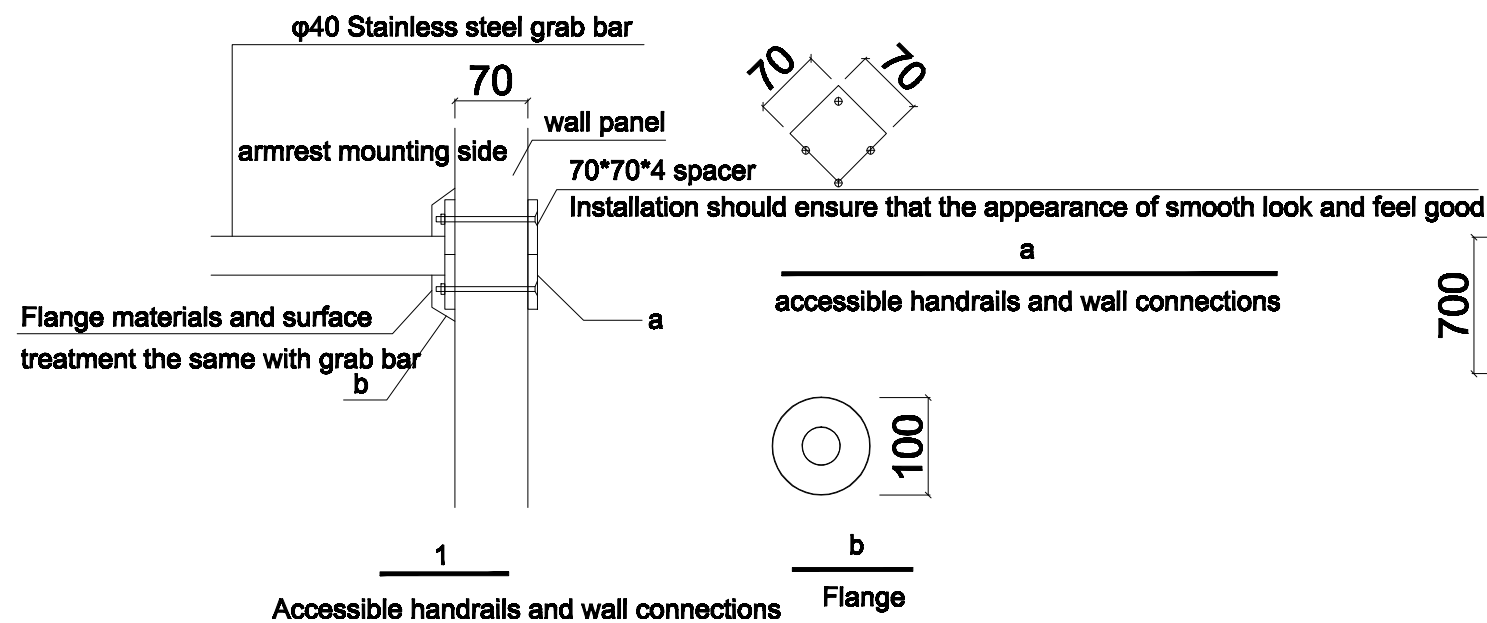


45

Project name 工程名称 by the sea hotel	Project No. 工程编号 PT160158	Designer 设计师 ZTH	Drawer 制图员 ZTH	Assessor 审核 夏季风	Page 图号 01
	Item 图纸名称	Category 设计阶段	Proofreader 校对 夏季风	Date 日期 2016.06.08	Proportion 比例 1:50



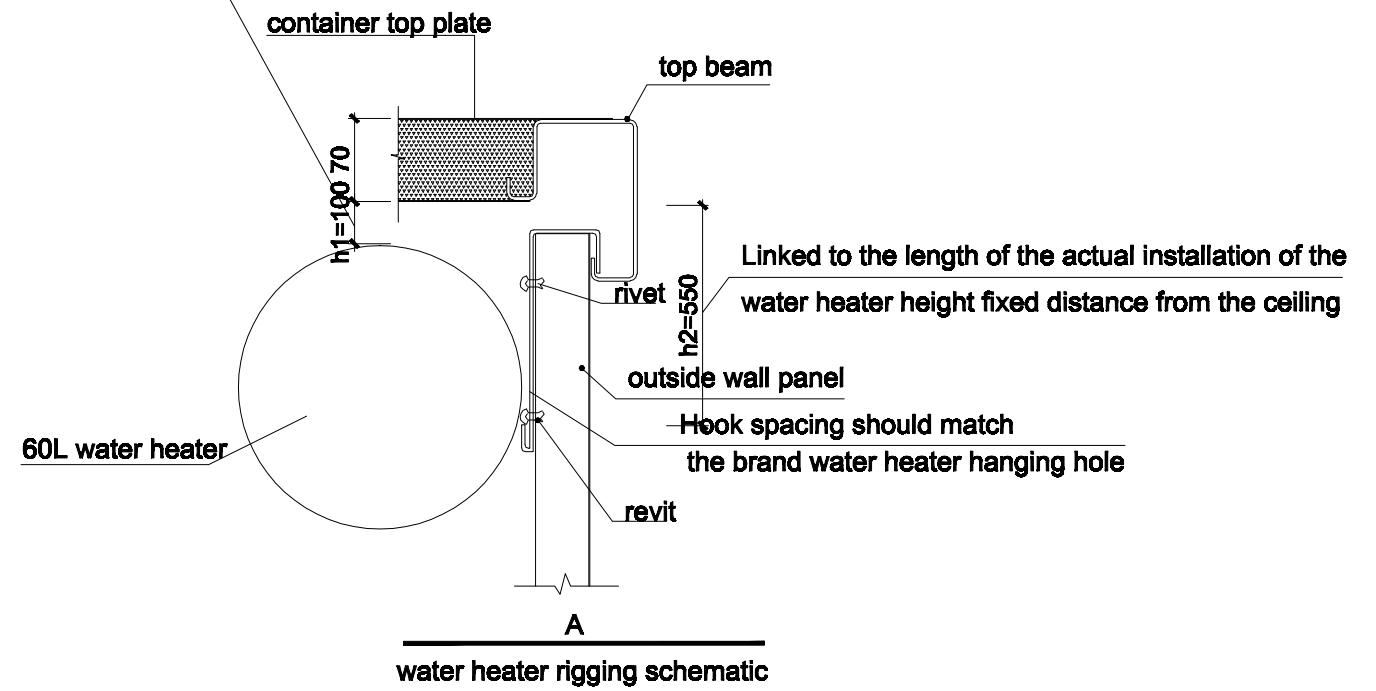
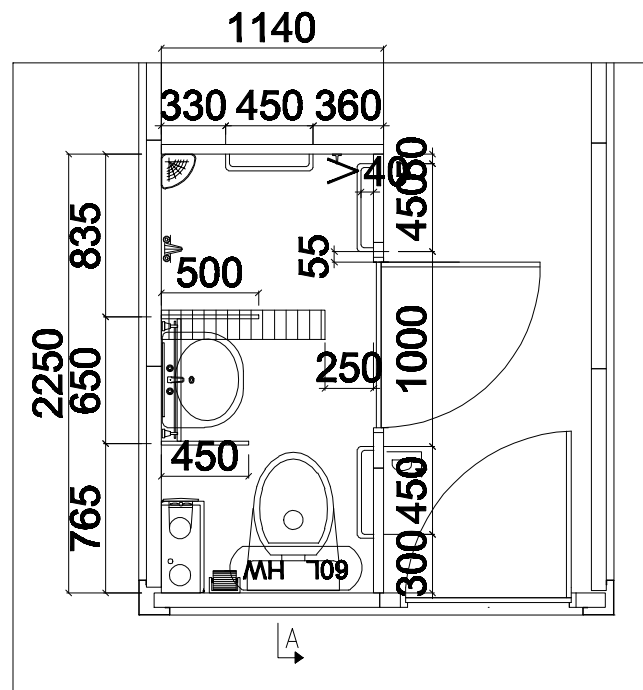
disabled toilet layout



Note: Accessible grab bars complete the interior floor surface elevation as the starting line

Project name 工程名称 by the sea hotel	Project No. 工程编号 PT160158 Item 图纸名称	Designer 设计师 ZTH Category 设计阶段	Drawer 制图员 ZTH Proofreader 校对 夏季风	Assessor 审核 夏季风 Date 日期 2016.06.08	Page 图号 01 Proportion 比例 1:50
--	--	---	--	---	--

the upper of heater hanging from the ceiling into consideration
 from the operating space as small as possible installed



Project name 工程名称	Project No. 工程编号 PT160158	Designer 设计师 ZTH	Drawer 制图员 ZTH	Assessor 审核 夏季风	Page 图号 01
by the sea hotel	Item 图纸名称	Category 设计阶段	Proofreader 校对 夏季风	Date 日期 2016.06.08	Proportion 比例 1:50

container top plate

top beam

70

50*3m

Angle iron

Air conditioning unit hanging installation schematic
Specific location can be adjusted according to the actual situation

Air conditioning unit Reference Size
800 (L) *600 (H) *260 (T) mm

wall panel

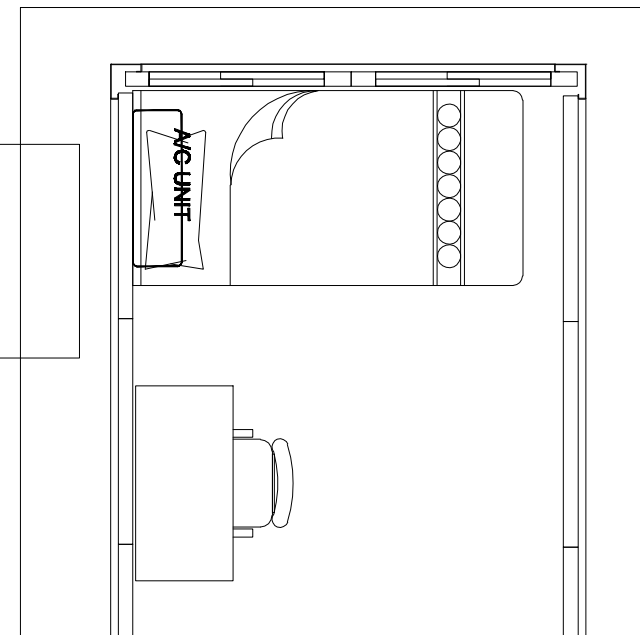
880

450

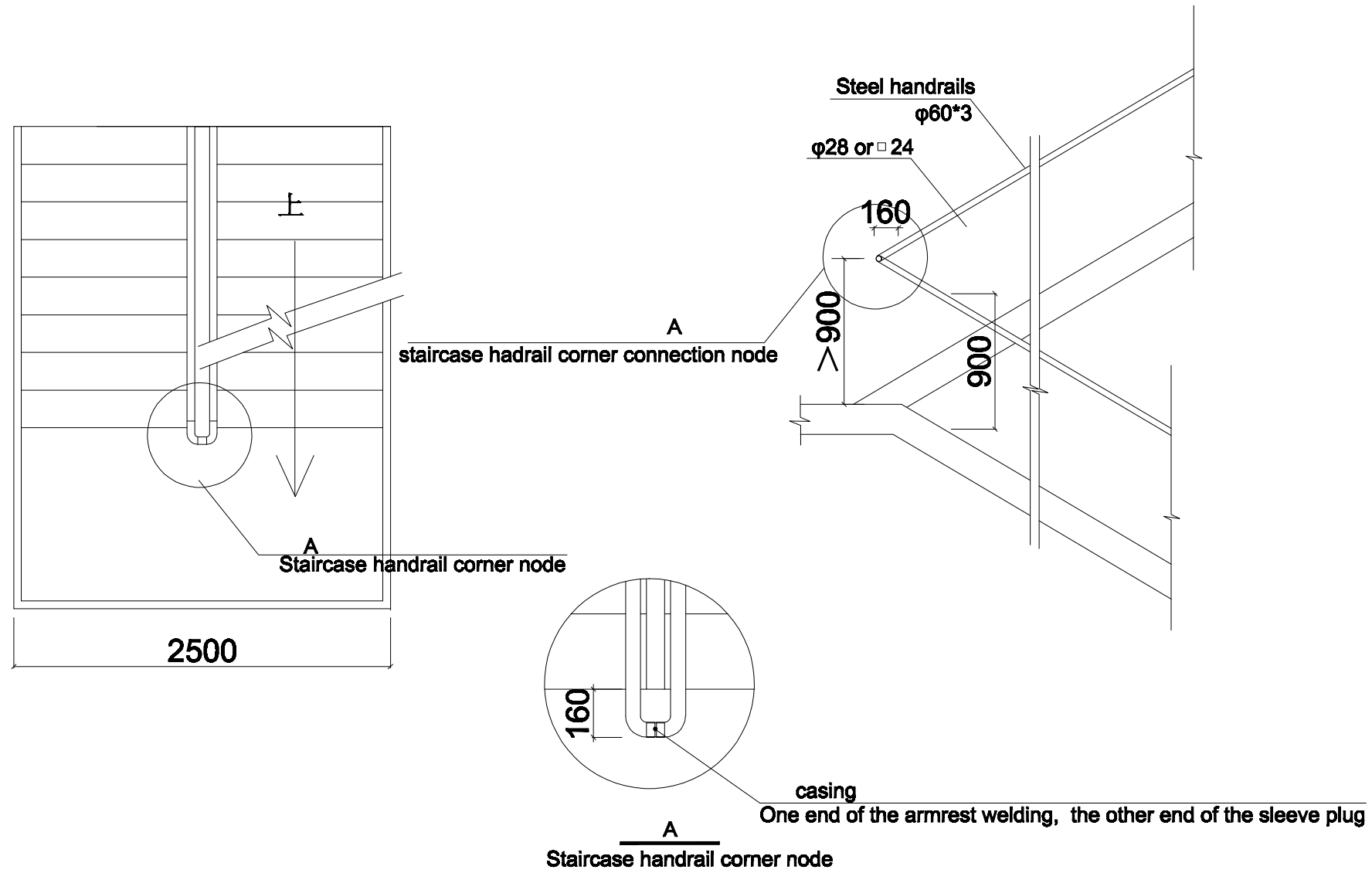
Angle iron, paint color the same with container wall panels

B

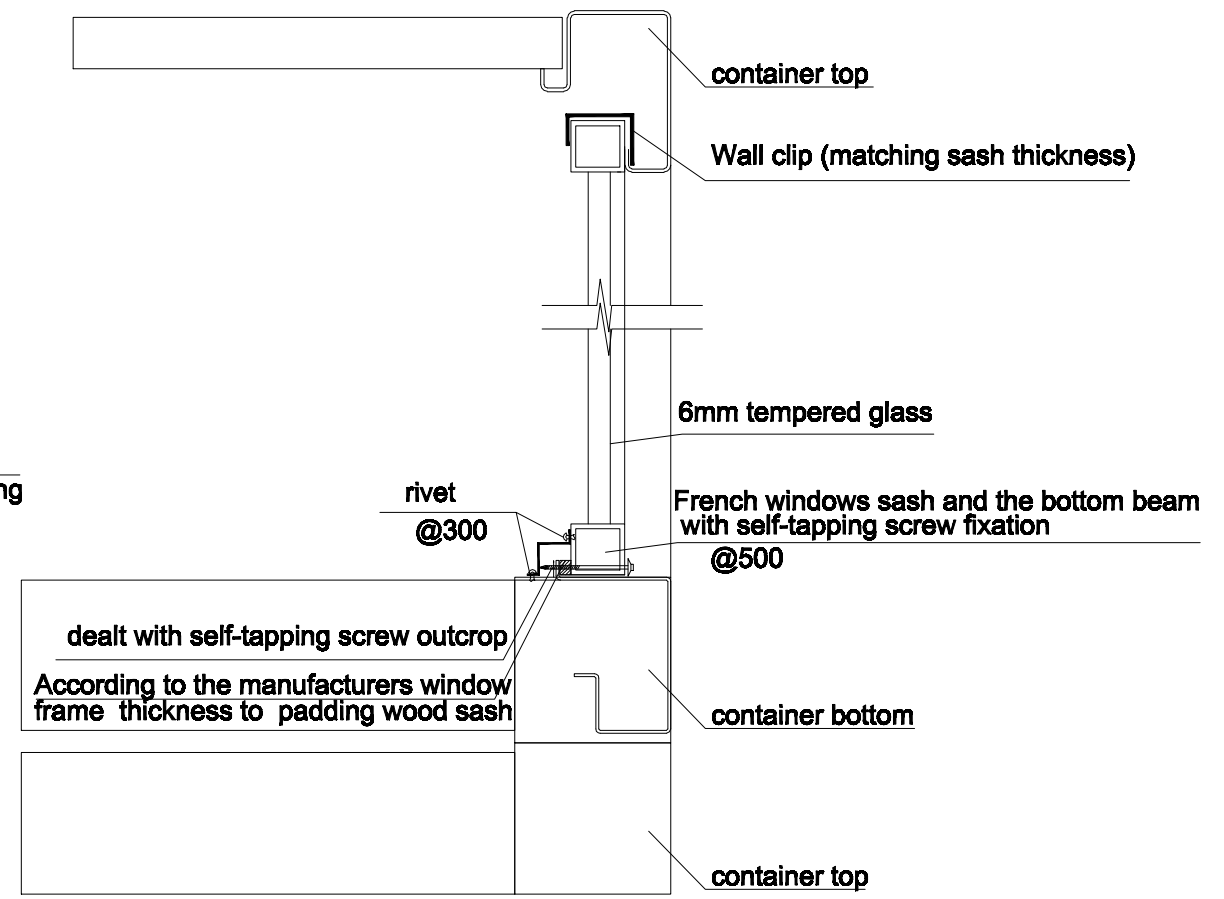
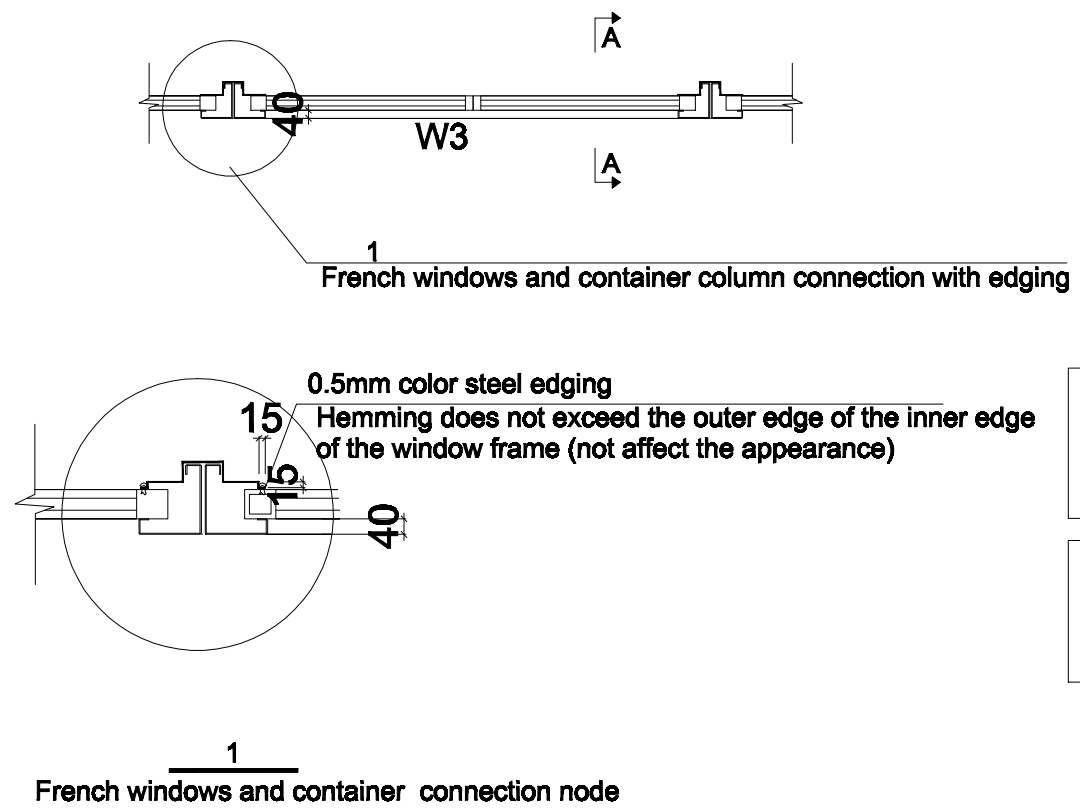
Air conditioning unit hanging installation schematic



Project name 工程名称	Project No. 工程编号 PT160158	Designer 设计师 ZTH	Drawer 制图员 ZTH	Assessor 审核 夏季风	Page 图号 01
by the sea hotel	Item 图纸名称	Category 设计阶段	Proofreader 校对 夏季风	Date 日期 2016.06.08	Proportion 比例 1:50

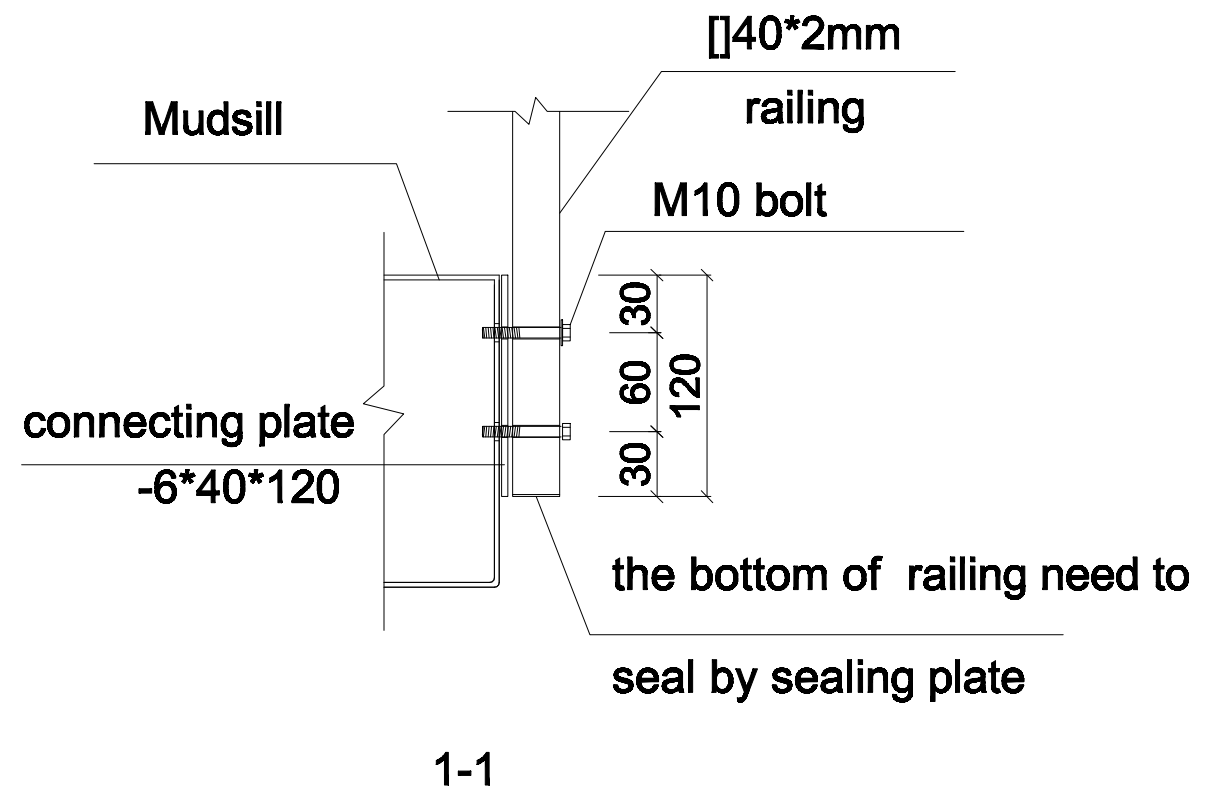
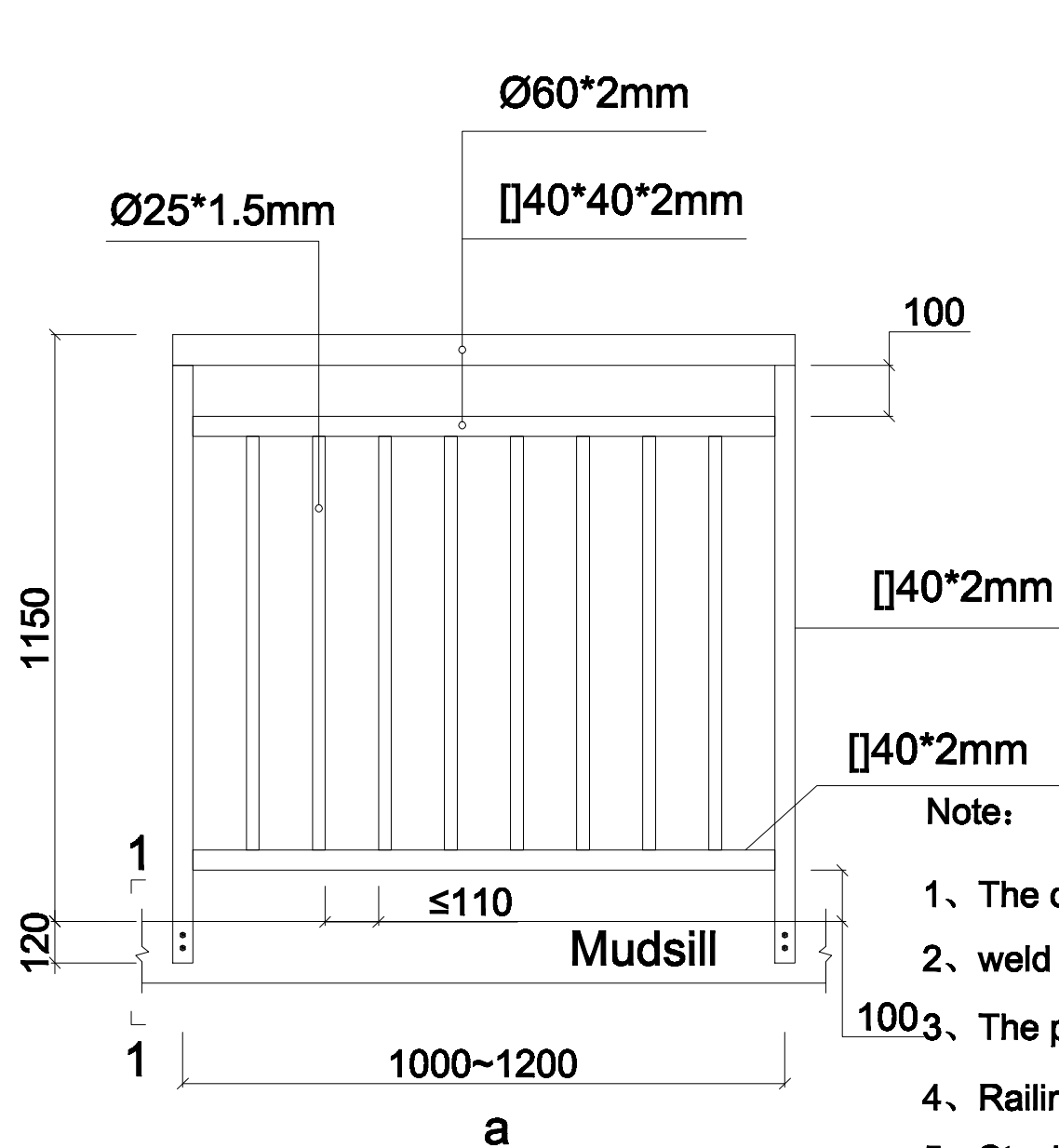


Project name 工程名称	Project No. 工程编号 PT160158	设计师 ZTH	制图员 ZTH	essor 审核 夏季风	Page 图号 01
by the sea hotel	Item 图纸名称	Category 设计阶段	Proofreader 校对 夏季风	Date 日期 2016.06.08	Proportion 比例 1:50



NOTE: The drawings and construction drawings technical tests are not specifically required by the company's regular practice, matters not please communicate!

Project name 工程名称 by the sea hotel	Project No. 工程编号 PT160158	المصمم 设计师 ZTH	المصمم 制图员 ZTH	Assessor 审核 夏季风	Page 图号 01
	Item 图纸名称	Category 设计阶段	Proofreader 校对 夏季风	Date 日期 2016.06.08	Proportion 比例 1:50

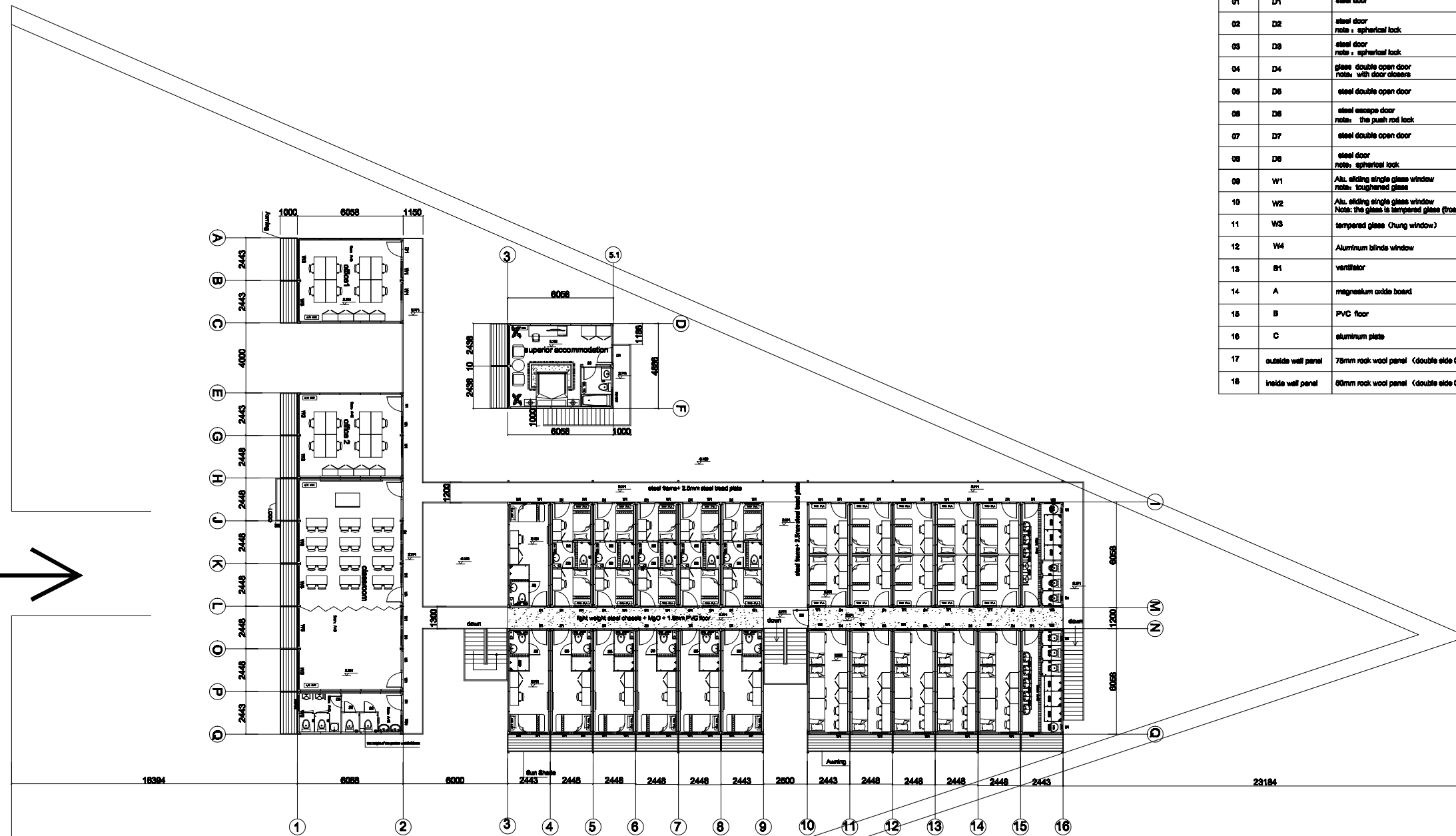


Note:

- 1、 The connecting plate bolt holes with inner M10 reserved.
- 2、 weld connecting plate to Mudsill
- 3、 The position of connecting plate and Mudsill bolt hole corresponds to the Ø18mm
- 4、 Railing on joints must be continuous
- 5、 Steel railing , galvanization 8~10µm, paint 90µm, Colours of paint: Ral 7005

Railing construction details

Project name 工程名称	Project No. 工程编号 PT160158	المصمم 设计师 ZTH	المصمم 制图员 ZTH	Assessor 审核 夏季风	Page 图号 01
集装箱	Item 图纸名称	Category 设计阶段	Proofreader 校对 夏季风	Date 日期 2016.06.08	Proportion 比例 1:50



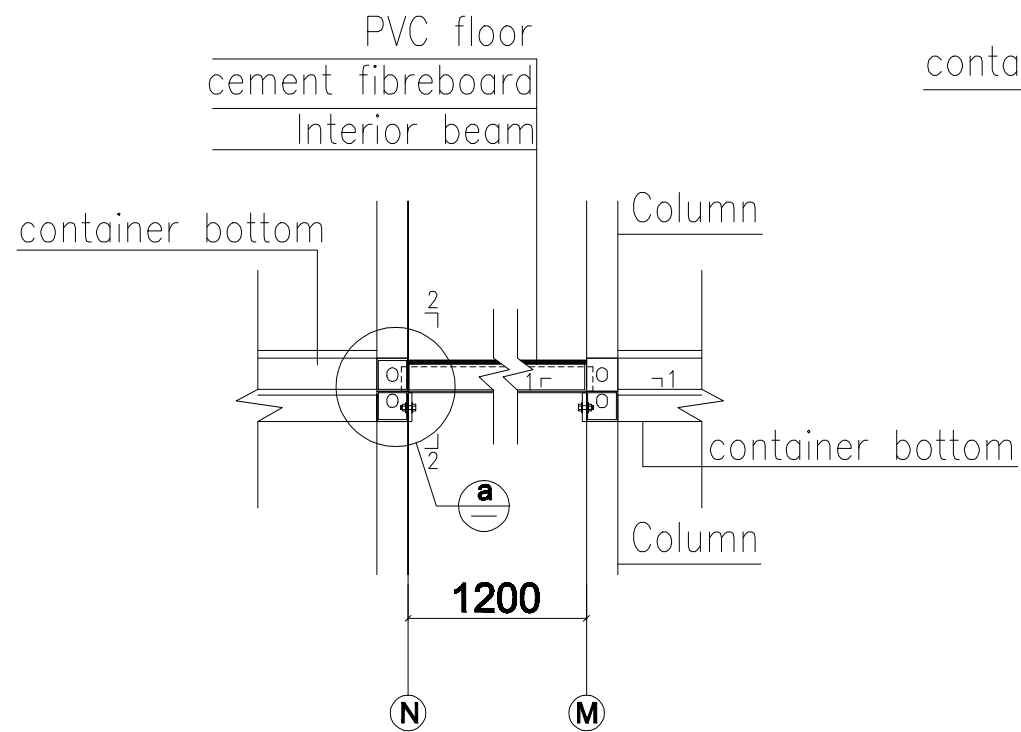
First floor layout

No.	Code	Name	Size (mm)	Remark
01	D1	steel door	800-2080	curved aluminum threshold the height of not more than 8mm
02	D2	steel door note: spherical lock	700-2000	curved aluminum threshold the height of not more than 8mm
03	D3	steel door note: spherical lock	800-2000	curved aluminum threshold the height of not more than 8mm
04	D4	glass double open door note: with door closers	1800-2880	curtain aluminum alloy frame
05	D5	steel double open door	1800-2880	curved aluminum threshold the height of not more than 8mm
06	D6	steel escape door note: the push rod lock	1000-2880	Core wool board
07	D7	steel double open door	1200-2880	curved aluminum threshold the height of not more than 8mm
08	D8	steel door note: spherical lock	800-2880	curved aluminum threshold the height of not more than 8mm
09	W1	Alu. sliding single glass window note: toughened glass	800-1200	insulating sash and PVC fabric type shutter
10	W2	Alu. sliding single glass window Note: the glass is tempered glass (frosted)	800-800	insulating sash
11	W3	tempered glass (unglazed window)	2400-2900	split
12	W4	Aluminum blinds window	800-800	used for well Mount roof terrace
13	B1	ventilator	250-250	external installation of metal shutters cover internal installation of stainless steel wire mesh
14	A	magnesium oxide board	18	
15	B	PVC floor	1.6	
16	C	aluminum plate	1.5	
17	outside wall panel	75mm rock wool panel (double side 0.45mm steel sheet ,rock wool density :100kg/m³)		
18	inside wall panel	80mm rock wool panel (double side 0.45mm steel sheet ,rock wool density :100kg/m³)		

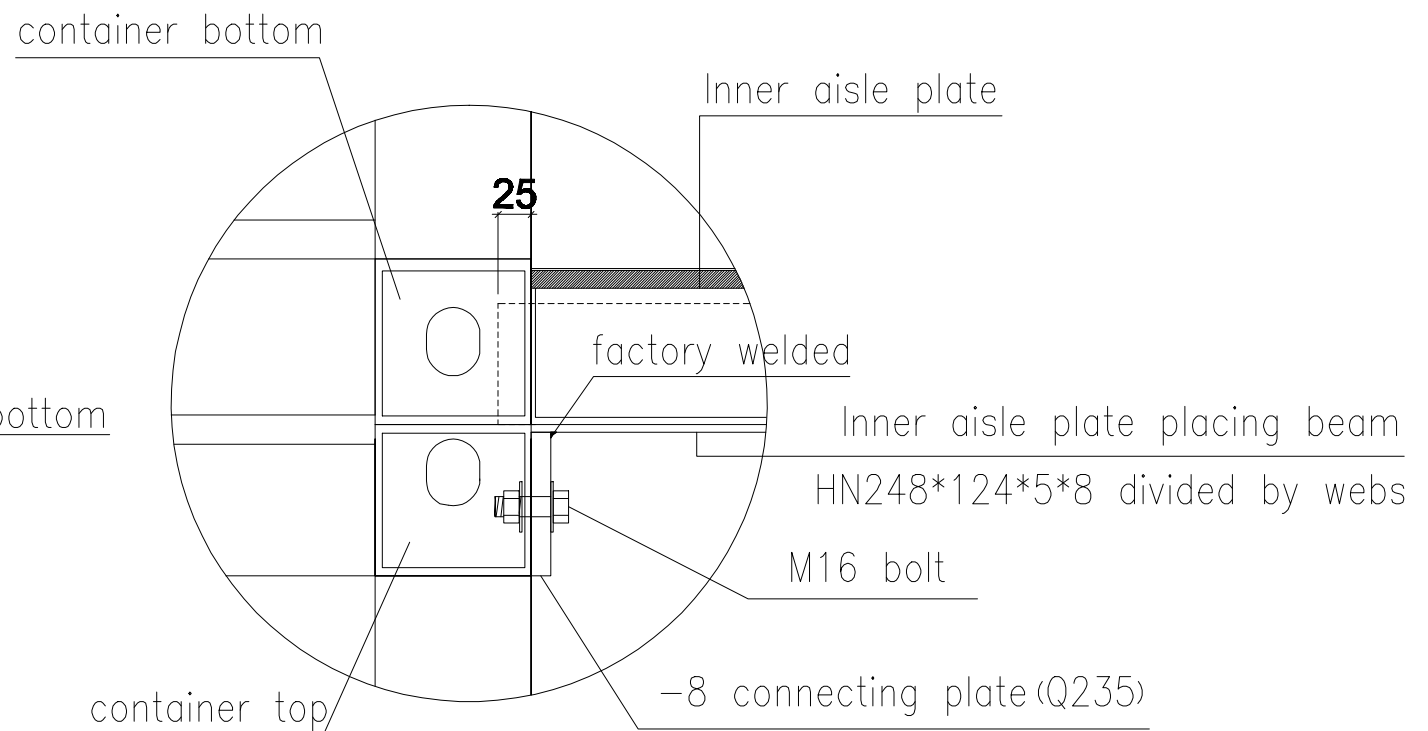
Note:

1. the integrated bathroom, there is need to raise the position of the toilet 120mm, the bottom of the slope of 8% water
2. In the project, the installation gap between each single module is 10mm.
3. In the project, all of the disabled toilet sink with hanging pots.
4. The whole building needs to stand tall 540mm.
5. All interior mirror with the required size is 500 * 700mm.
6. Water heater installation projects require pre-mounting bracket.

Project name 工程名称 by the sea hotel	Project No. 工程编号 PT160158 Item 图纸名称	Designer 设计师 ZTH Category 设计阶段 PROPOSAL	Drawer 制图员 ZTH Proofreader 校对 夏季风	Assessor 审核 夏季风 Date 日期 2016.06.16	Page 图号 02 Proportion 比例
--	--	--	--	---	-----------------------------------



Inner aisle and container connection node



a

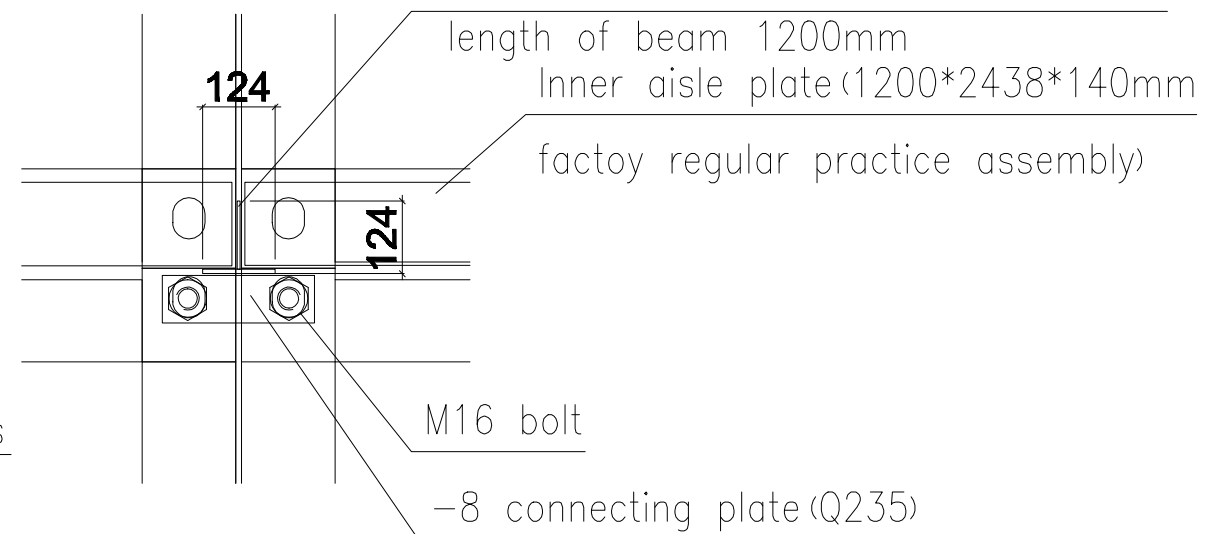
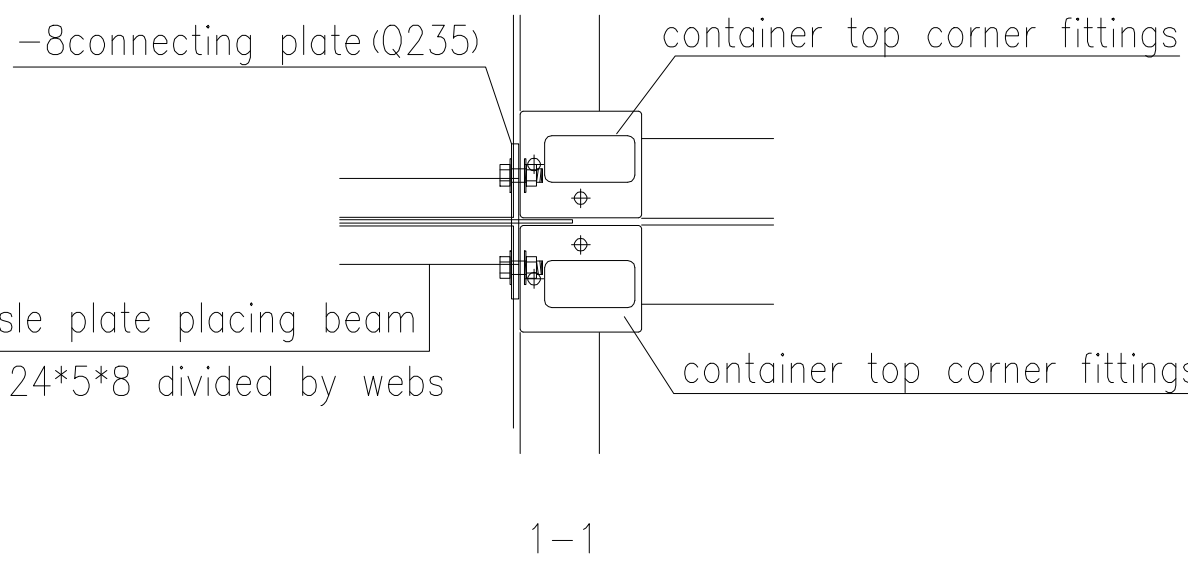
HN248*124*5*8 divided by webs

Aisle plate and connecting plate welding,

length of beam 1200mm

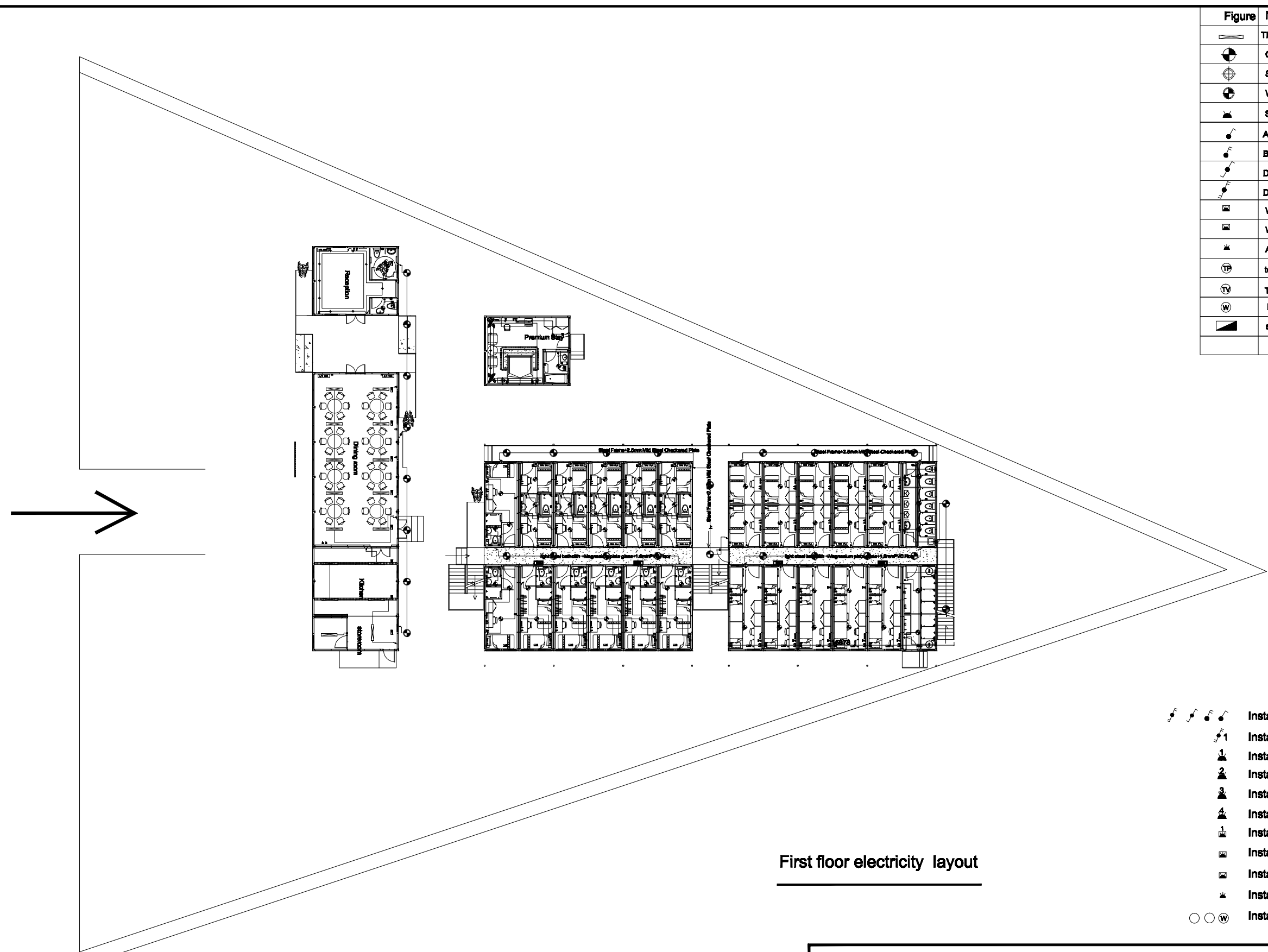
Inner aisle plate (1200*2438*140mm

factory regular practice assembly)



Project name 工程名称	Project No. 工程编号 PT160158	Designer 设计师 ZTH	Drawer 制图员 ZTH	Assessor 审核 夏季风	Page 图号 01
by the sea hotel	Item 图纸名称	Category 设计阶段	Proofreader 校对 夏季风	Date 日期 2016.06.08	Proportion 比例 1:50

Figure	Name	Standard (specification)
	Three anti fluorescent light	220V,40W
	Ceiling lamp	220V,18W
	Spotlight	220V,5W
	Waterproof ceiling light	220V,18W
	Socket	10A, 2 Plug
	A single phase switch	
	B single phase switch	
	Dual-control switch	
	Double-double control switch	
	Waterproof socket	16A, 3 plug
	Waterproof socket	10A, 2 Plug
	Ac socket	16A, 3 Plug
	telephone socket	
	TV socket	
	Broadband Socket	
	switch box	



- Installation Height: 1200mm
- Installation Height: 600mm
- Installation Height: 1000mm
- Installation Height: 800mm
- Installation Height: 1600mm
- Installation Height: 1800mm
- Installation Height: 600mm
- Installation Height: 1600mm
- Installation Height: 1400mm
- Installation Height: 1800mm
- Installation Height: 1000mm

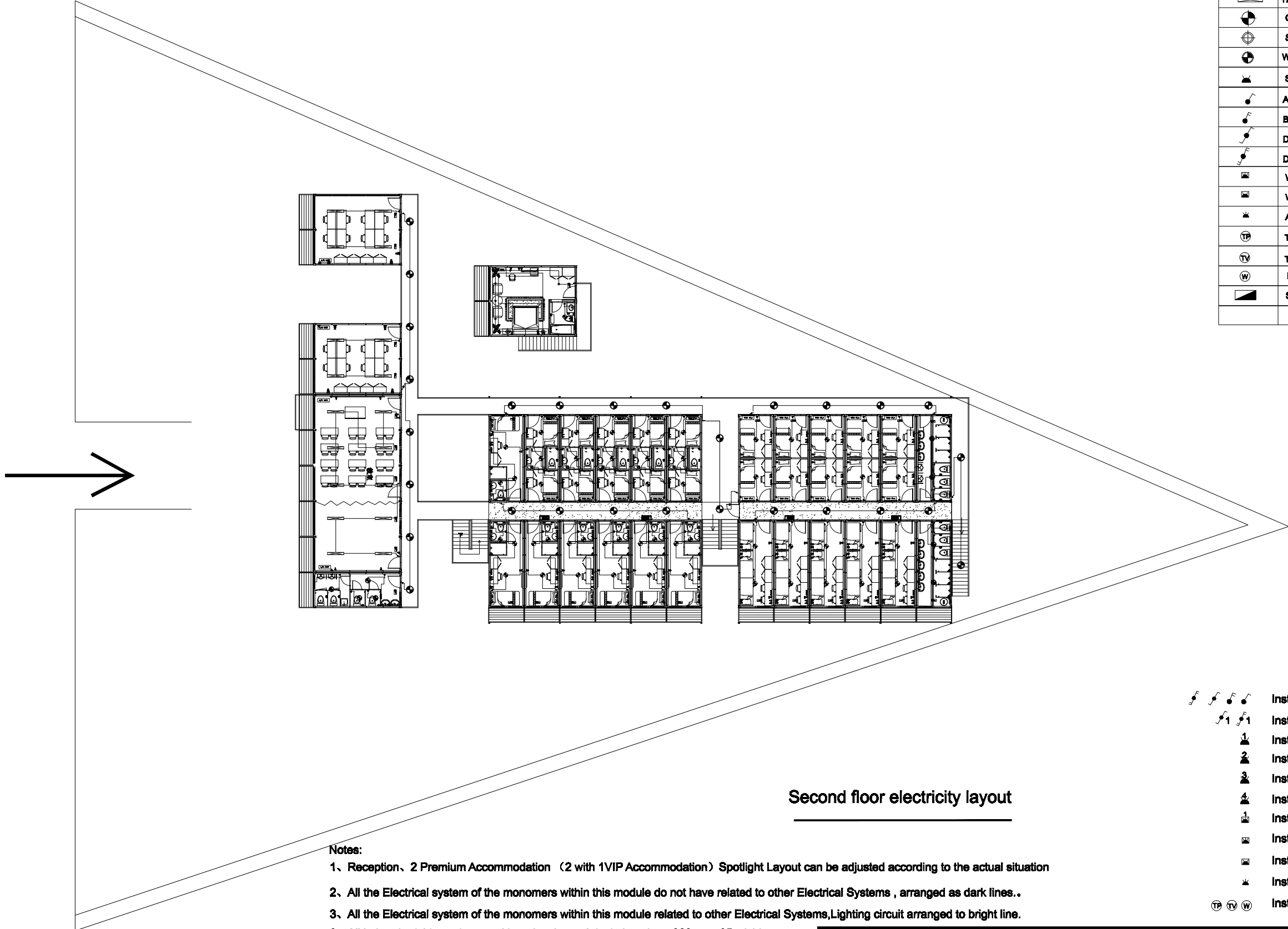
- Notes:
1. Reception, 2 Premium Accommodation (2 with 1VIP Accommodation) Spotlight Layout can be adjusted according to the actual situation
 2. All the Electrical system of the monomers within this module do not have related to other Electrical Systems , arranged as dark lines..
 3. All the Electrical system of the monomers within this module related to other Electrical Systems,Lighting circuit arranged to bright line.
 4. All indoor bedside sockets positioned as Lateral deviation about 300mm of Bedside.

First floor electricity layout

Project name 工程名称 by the sea hotel	Project No. 工程编号 PT160158 Item 图纸名称	Designer 设计师 ZTH Category 设计阶段 PROPOSAL	Drawer 制图员 ZTH Proofreader 校对 夏季风	Assessor 审核 夏季风 Date 日期 2016.06.16	Page 图号 04 Proportion 比例
--	--	--	--	---	-----------------------------------

n.

Figure	Name	Standard(Specification)
	Three anti fluorescent light	220V,40W
	Ceiling Lamp	220V,18W
	Spot Light	220V,5W
	Waterproof ceiling light	220V,18W
	Socket	10A, 2 Plug
	A single phase switch	
	B single phase switch	
	Dual-control switch	
	Double-double control switch	
	Water proof Socket, 3 Plug	
	Water Proof Socket, 2 Plug	
	Ac Socket	16A, 3 Plug
	Telephone Socket	
	TV Socket	
	Broadband Socket	
	Switch Box	



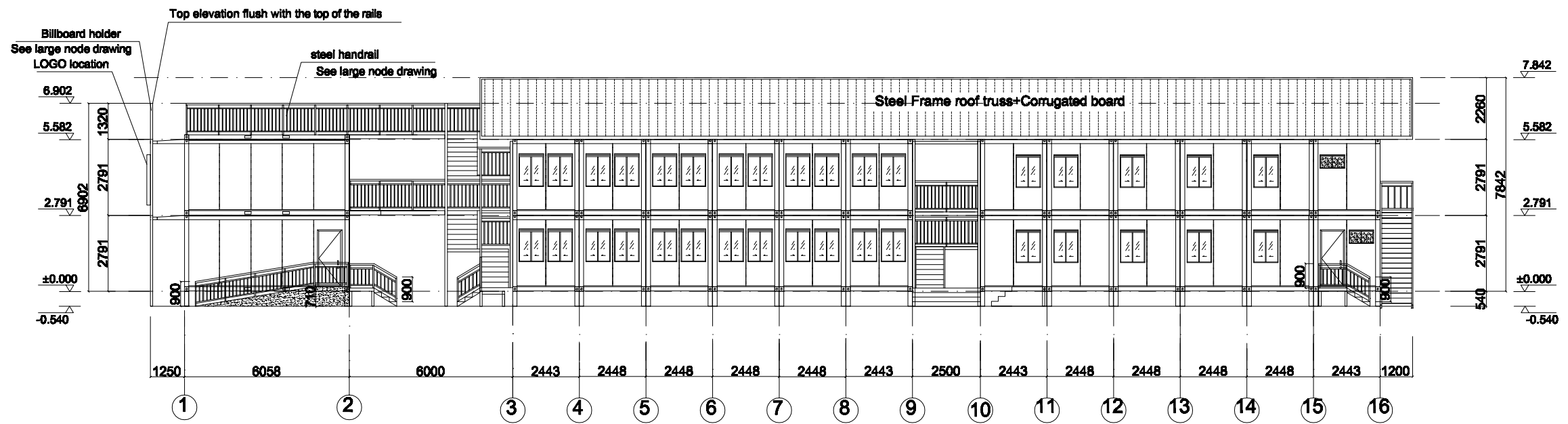
Second floor electricity layout

Notes:

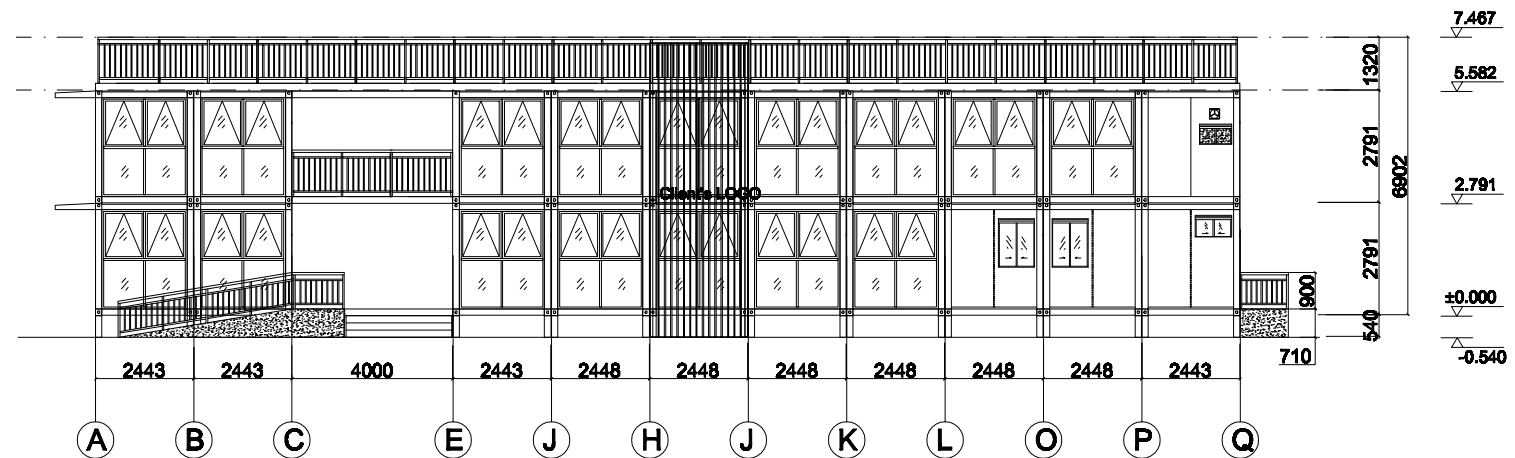
- 1、 Reception、 2 Premium Accommodation (2 with 1VIP Accommodation) Spotlight Layout can be adjusted according to the actual situation
- 2、 All the Electrical system of the monomers within this module do not have related to other Electrical Systems , arranged as dark lines..
- 3、 All the Electrical system of the monomers within this module related to other Electrical Systems,Lighting circuit arranged to bright line.
3. All indoor bedside sockets positioned as Lateral deviation about 300mm of Bedside.

- Installation Height: 1200mm
- Installation Height: 600mm
- Installation Height: 1000mm
- Installation Height: 600mm
- Installation Height: 1600mm
- Installation Height: 1800mm
- Installation Height: 600mm
- Installation Height: 1600mm
- Installation Height: 1400mm
- Installation Height: 1800mm
- Installation Height: 1000mm

Project name 工程名称 by the sea hotel	Project No. 工程编号 PT160158 Item 图纸名称	Designer 设计师 ZTH Category 设计阶段 PROPOSAL	Drawer 制图员 ZTH Proofreader 校对 夏季风	Assessor 审核 夏季风 Date 日期 2016.06.16	Page 图号 05 Proportion 比例
--	--	--	--	---	-----------------------------------



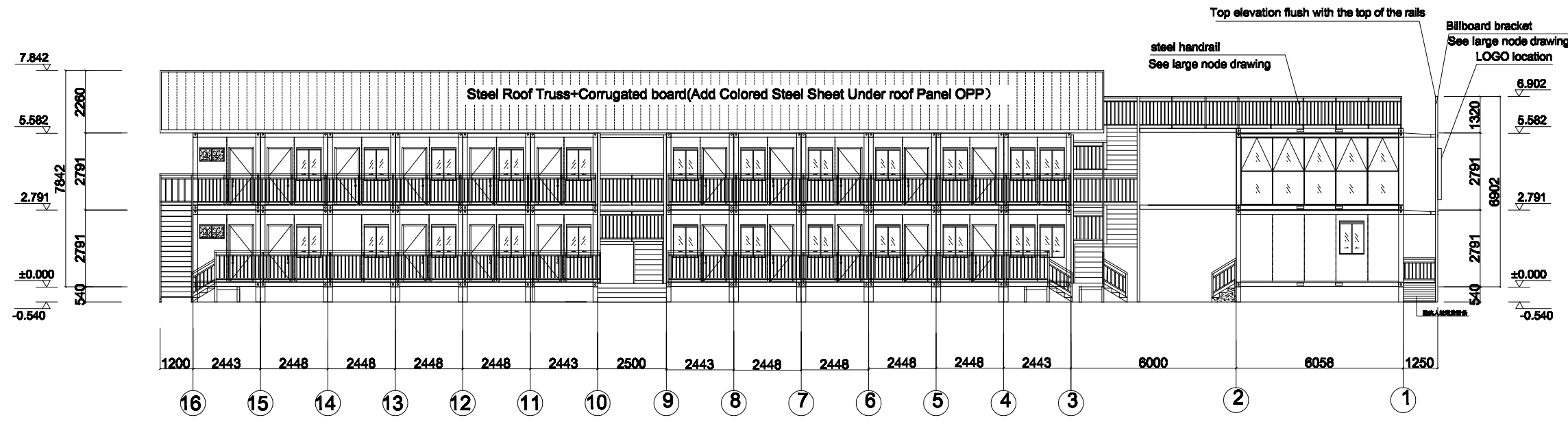
A



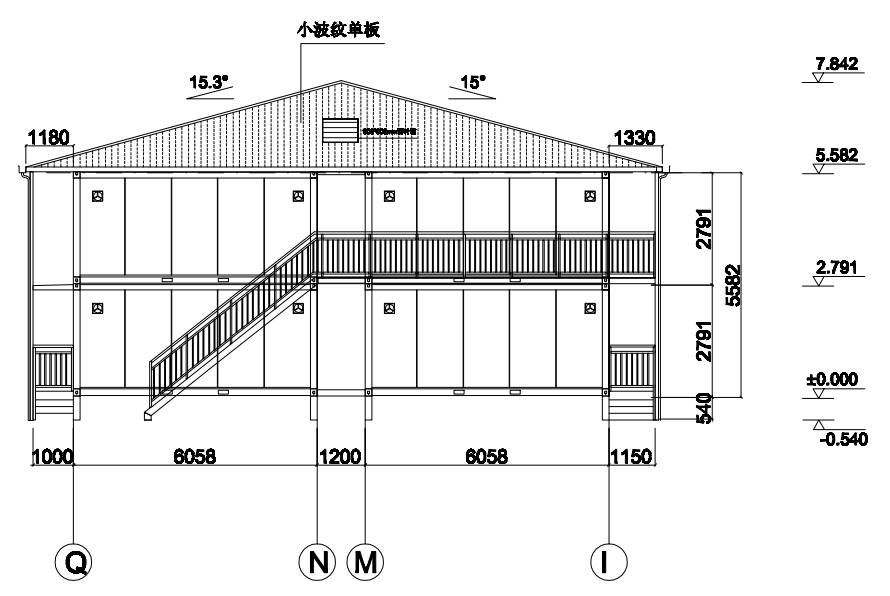
B

Note: The elevation in the level , No special instructions are marked to the tank top or bottom mount.

Project name 工程名称 by the sea hotel	Project No. 工程编号 PT160158 Item 图纸名称 elevation	Designer 设计师 ZTH Category 设计阶段	Drawer 制图员 ZTH Proofreader 校对 夏季风	Assessor 审核 夏季风 Date 日期 2016.06.08	Page 图号 03 Proportion 比例
--	--	---	--	---	-----------------------------------

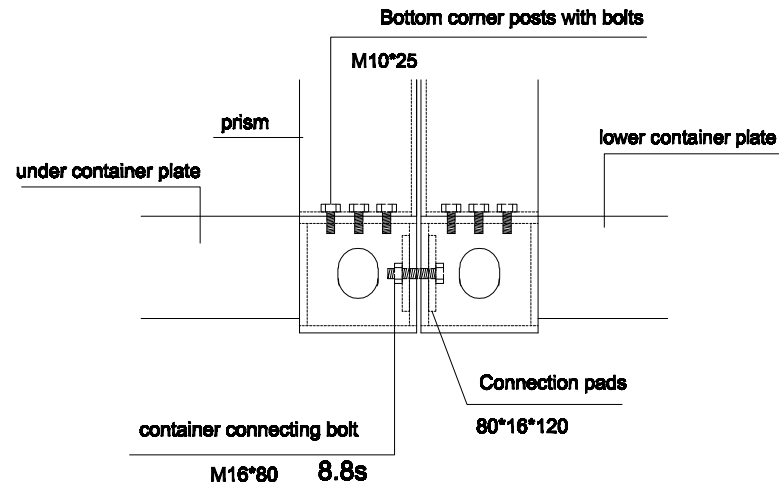


C

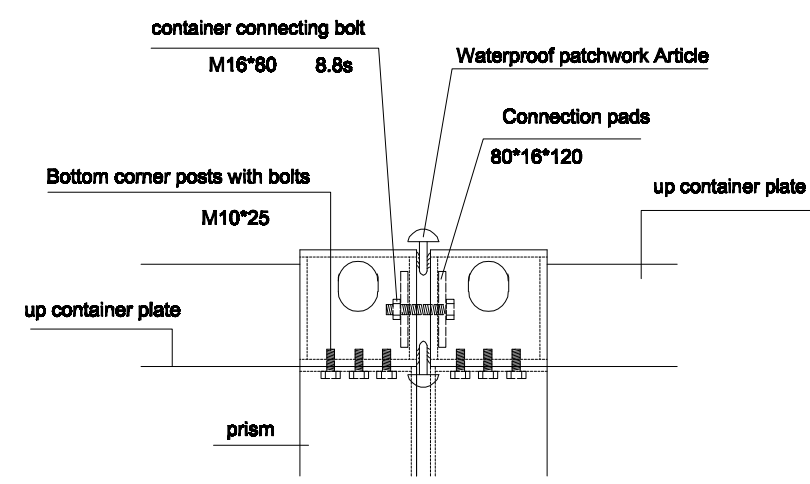


D

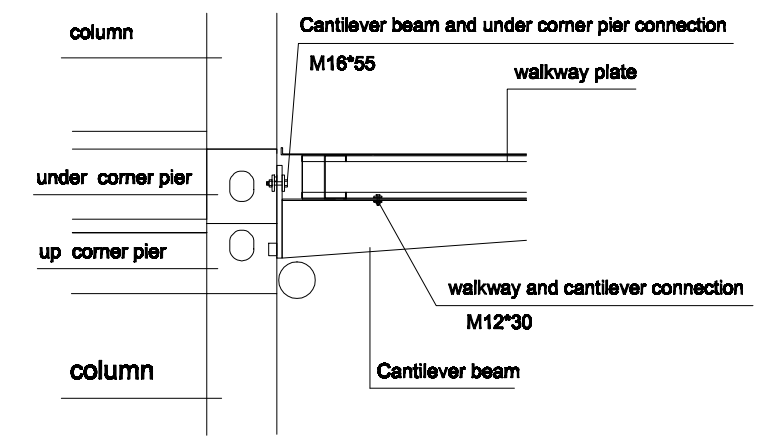
Project name 工程名称 by the sea hotel	Project No. 工程编号 PT160158	Designer 设计师 ZTH	Drawer 制图员 ZTH	Assessor 审核 夏季风	Page 图号 04
	Item 图纸名称	Category 设计阶段	Proofreader 校对 夏季风	Date 日期 2016.06.08	Proportion 比例



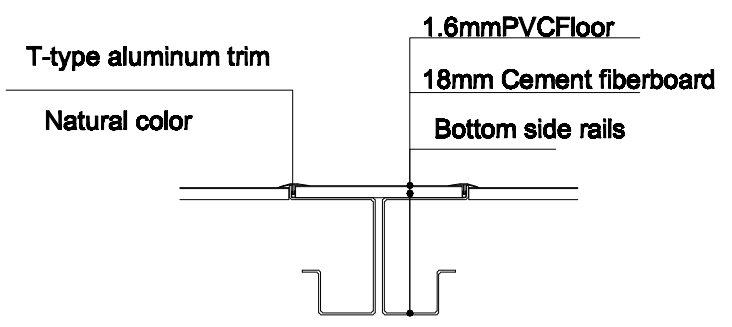
Under the pier splicing comp



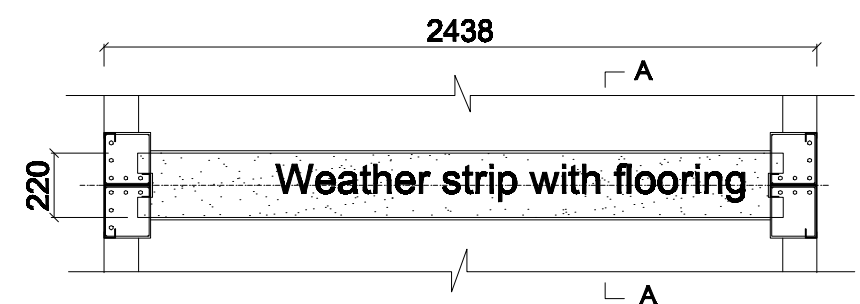
Up the pier splicing comp



walkway palte and container connection

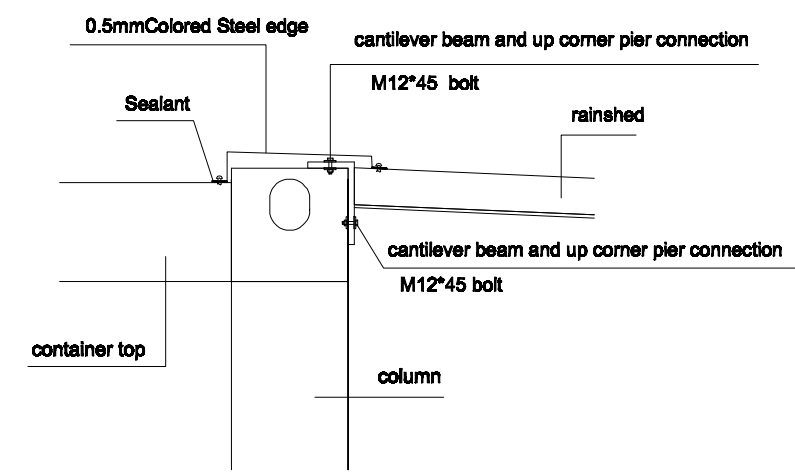


A-A



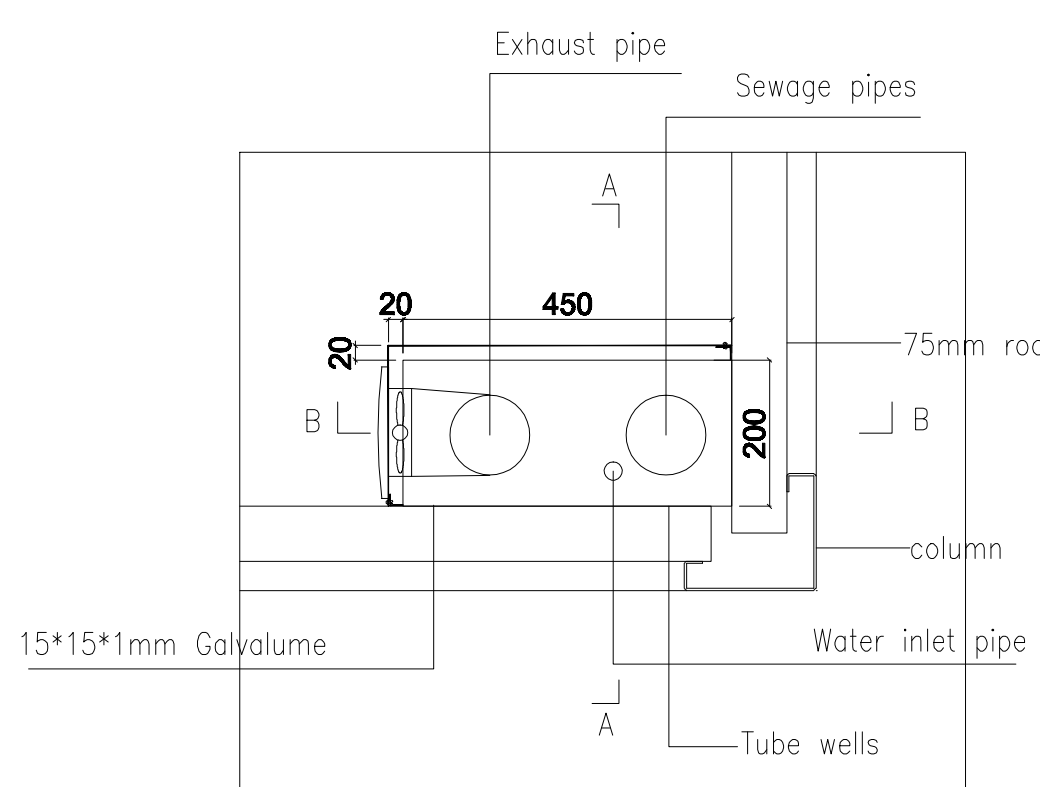
connection place floor

(The specific size according to the actual site cutting)

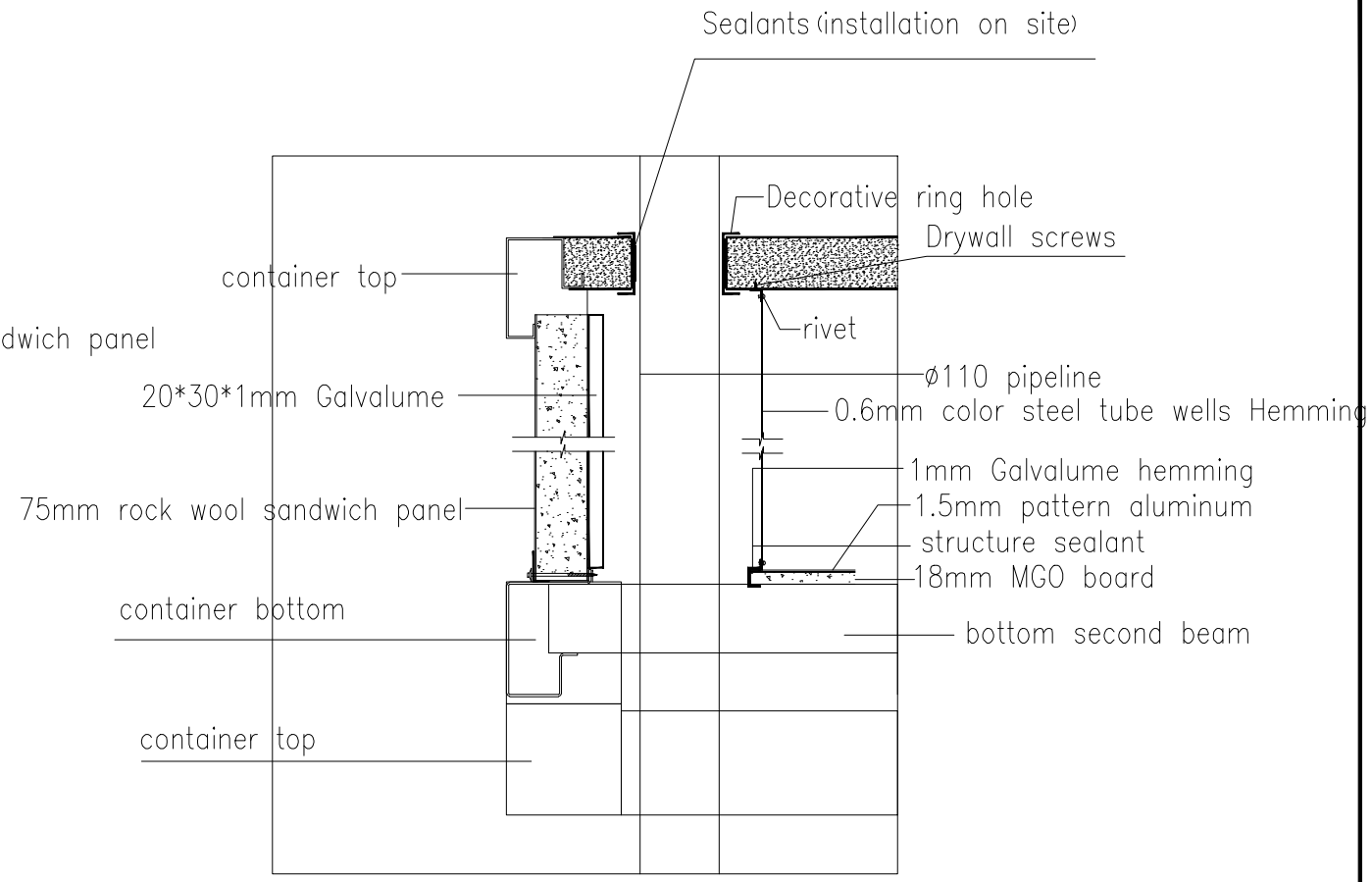


Canopy and container connection node

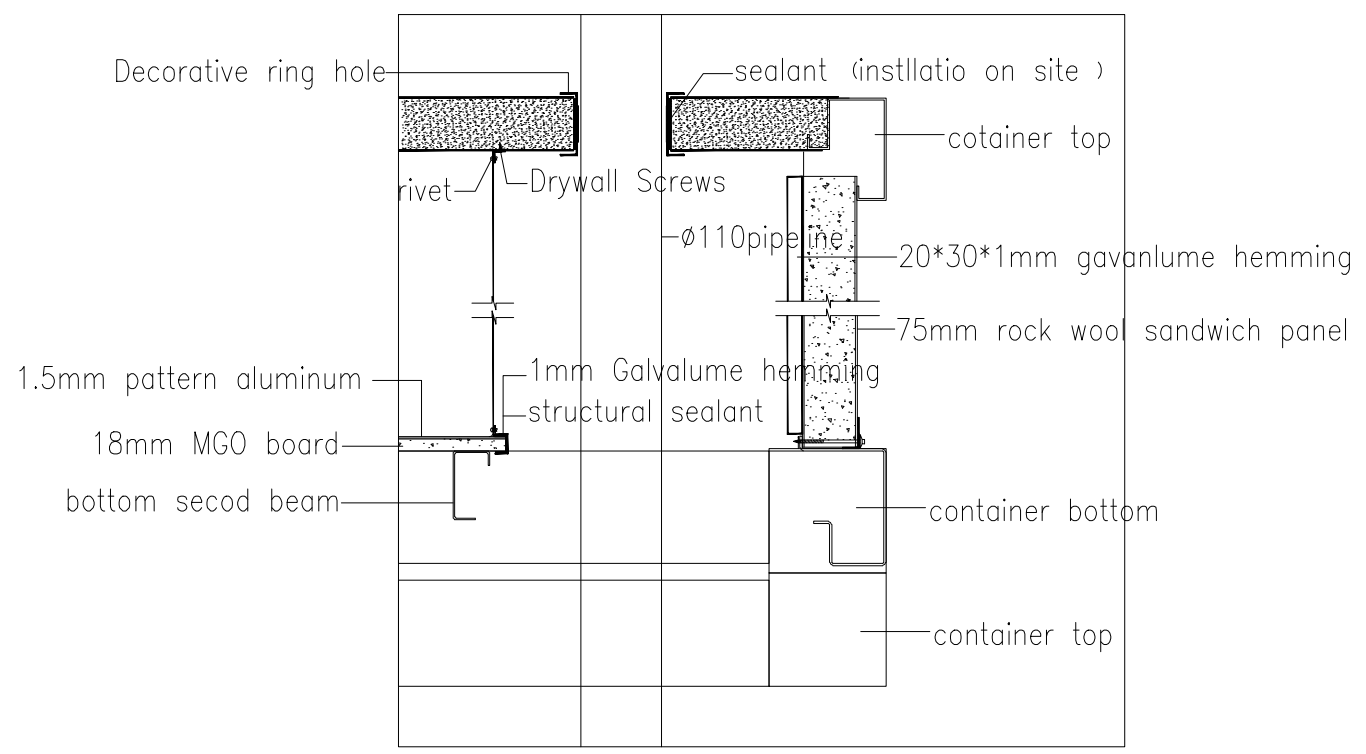
Project name 工程名称 by the sea hotel	Project No. 工程编号 PT160158 Item 图纸名称	Designer 设计师 ZTH Category 设计阶段	Drawer 制图员 ZTH Proofreader 校对 夏季风	Assessor 审核 夏季风 Date 日期 2016.06.08	Page 图号 01 Proportion 比例 1:50
--	--	---	--	---	--



Tube wells layout



A-A



B-B

Note:

- 1: Sewage row down, the ventilation row up , roof ventilation pipe out of the box, but not outside of the roof truss
- 2: tube wells, prescribing hole on the bottom , tank hole on the top open , hole size to the actual pipeline zoom $\phi 10\text{mm}$

Project name 工程名称 by the sea hotel	Project No. 工程编号 160158 Item 图纸名称 管道井结构图	Designer 设计师 ZTH Category 设计阶段	Drawer 制图员 ZTH Proofreader 校对 夏季风	Assessor 审核 夏季风 Date 日期 2016.06.08	Page 图号 01 Proportion 比例 1:50
--	---	---	--	---	--